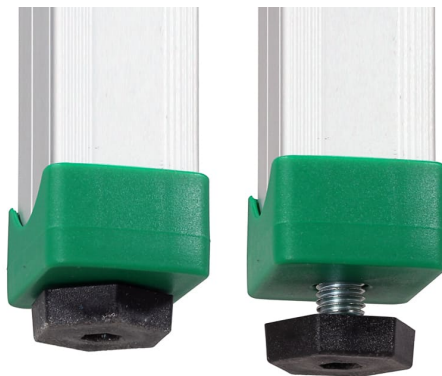
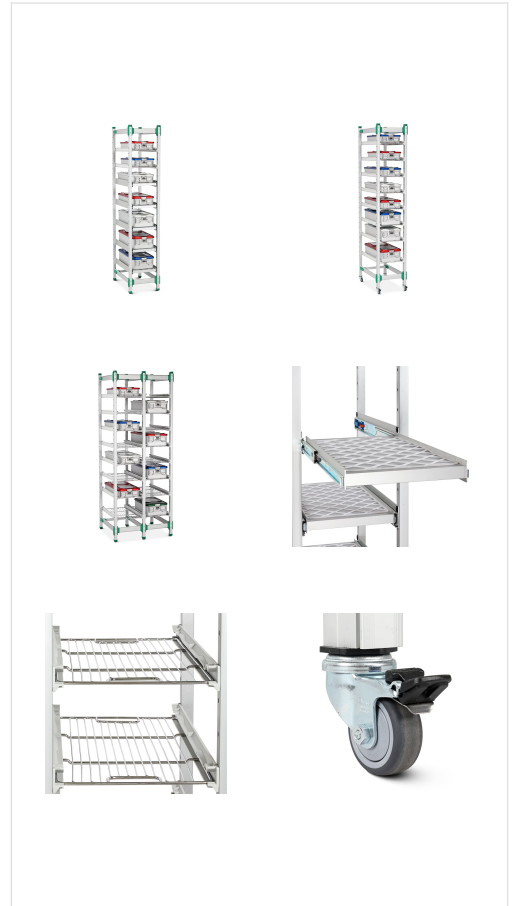


Sterile Container Storage

Product Images



Description

FEATURES

- Fully configurable freestanding modular racking suitable for the safe storage of sterile containers
- Compatible with both blue wrap & rigid containers stored on either...
 - Telescopic shelves - Compatible with containers up to max 600 x 300mm (width x depth)
 - Wire grid shelves - Compatible with containers up to max 600 x 250mm (width x depth)
- Anodised extruded aluminium uprights & cross members
- Bolted construction using high quality moulded fixings provided rigidity & allows the system to be altered easily
- Available as either static or mobile units
 - Static - Adjustable feet allow levelling on uneven floors
 - Mobile - 50mm pressed steel castors
- Optional wall mounting brackets allow static units to be fixed securely to the wall (when units are loaded over 100kg)
- Supplied for self-assembly

OVERALL DIMENSIONS

Static

- Single Bay - 394 x 642 x 1940mm
- Double Bay - 737 x 642 x 1940mm

Mobile (50/80mm Castors)

- Single Bay - 394 x 642 x 1996
- Double Bay - 737 x 642 x 1996

STANDARD COLOURS

- Uprights & Cross Members - Anodised Aluminium
- Wire Grids - Polished Stainless Steel
- Telescopic Shelves - Anodised Aluminium
- Plastic Mouldings - Green / Grey

Code	Description	Weight
4HH/SCS/S1/2W5T	Static, Single Bay, 2 x Wire Grid Shelves & 5 x Telescopic Shelves	30.2kg
4HH/SCS/S1/8W	Static, Single Bay, 8 x Wire Grid Shelves	21.4kg
4HH/SCS/S2/4W10T	Static, Double Bay, 4 x Wire Grid Shelves & 10 x Telescopic Shelves	56.9kg
4HH/SCS/S2/16W	Static, Double Bay, 16 x Wire Grid Shelves	38kg
4HH/SCS/M51/2W5T	Mobile, Single Bay, 2 x Wire Grid Shelves & 5 x Telescopic Shelves	31.1kg
4HH/SCS/M51/8W	Mobile, Single Bay, 8 x Wire Grid Shelves	22.3kg
4HH/SCS/M52/4W10T	Mobile, Double Bay, 4 x Wire Grid Shelves & 10 x Telescopic Shelves	58.2kg
4HH/SCS/M52/16W	Mobile, Double Bay, 16 x Wire Grid Shelves	39.3kg