



# Mobile Computer Carts & Roll Stands

Laptop Carts	334
VESA Carts	338
Options / Accessories	343
Caretray Trolley - Laptop	347
Roll-Stand	348
Point of Care Cart	349

## Laptop Cart - Compact, Fixed Height, Non-Powered

### Features

- Compact, non-powered cart suitable for use with laptops
- Lightweight design, assists manoeuvrability
- Ideal for use in restricted spaces
- Five leg base, yellow colour coding identifies braking castors
- Polymer easyclean work-surface
- Fixed height - 1000mm
- Integral push handle at front
- Power supply holder at rear of unit
- 50mm twin-wheel castors (3 x braking)

### Dimensions (w x d x h)

- Overall - 500 x 500 x 1000mm
- Work Surface - 436 x 413mm (includes handle) at height 1000mm
- Power Supply Holder - 350 x 80 x 90mm (internal)

### Colours

- Base - White / Yellow / Grey
- Upright - White
- Worksurface - White



SMS/LC/FHC

Item	Description	Weight
SMS/LC/FHC	Laptop Cart - Compact, Fixed Height, Non-Powered	12.18kg

# Laptop Cart - Compact, Non-Powered

## Features

- Compact, non-powered cart suitable for use with laptops
- Lightweight design, assists manoeuvrability
- Ideal for use in restricted spaces
- Five leg base, yellow colour coding identifies braking castors
- Polymer easyclean work-surface
- Height adjustable using a gas damper (800 - 1050mm)
- Integral push handle at front
- Power supply holder at rear of unit
- 50mm twin-wheel castors (3 x braking)

## Dimensions (w x d x h)

- Overall - 500 x 500 x 800 - 1050mm
- Work Surface - 460 x 413mm (includes handle)
- Power Supply Holder - 350 x 80 x 90mm (internal)

## Colours

- Base - White / Yellow / Grey
- Upright - White
- Worksurface - White



SMS/LC/C

Item	Description	Weight
SMS/LC/C	Laptop Cart - Compact, Non-Powered	17.26kg

## Laptop Cart - Intermediate, Non-Powered

### Features

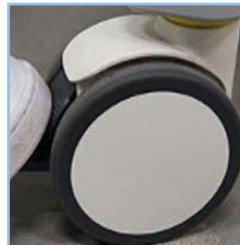
- Non-powered cart suitable for use with laptops
- Suitable for laptops up to 436mm in width
- Clamp to secure the laptop
- Height adjustable using a gas damper (833 - 1233mm)
- Four-leg base
- Polymer easy clean work-surface
- Integral push handle at front
- 100mm twin-wheel castors (2 x braking)

### Dimensions (w x d x h)

- Overall - 611 x 660 x 833 - 1233mm
- Work Surface - 550 x 580mm (includes handle)

### Colours

- Base - Grey
- Upright - Grey
- Work Surface - White



The brake is engaged & disengaged using downwards pressure on the two levers



5AL/LC

Item	Description	Weight
5AL/LC	Laptop Cart - Intermediate, Non-Powered	16.7kg

# Laptop Cart - Advanced, Non-Powered

## Features

- Non-powered cart suitable for use with laptops
- Laptop is secured under the worksurface, concealing the keyboard
- Suitable for laptops up to 436mm in width
- Height adjustable using a pulley system (800 - 1300mm)
- Pull out keyboard tray, can be tilted & features an integrated wrist support. Mouse tray is retractable for right / left hand use
- Bin with integral handle at the rear of the unit
- Four-leg base
- Polymer easy clean work-surface
- Integral push handle at front
- 100mm twin-wheel anti-static castors (2 x braking)

## Dimensions (w x d x h)

- Overall - 611 x 727 x 800 - 1300mm
- Work Surface - 550 x 480mm (includes handle)

## Standard Colours

- Base - Grey
- Upright - Grey
- Work Surface - White

## Option / Accessories

- 5AL/KB - Qwerty Keyboard
- 5AL/MO - Mouse
- 5AL/PA - Power Adaptor
- 5AL/RPC - Retractable Power Cable
- 5AL/DR - Drawer Unit



5AL/LC/A  
(Optional AIO PC & Drawer Unit not Included)

Item	Description	Weight
5AL/LC/A	Laptop Cart - Advanced, Non-Powered	29.5kg

## VESA Cart - Compact, Fixed Height, Non-Powered

### Features

- Suitable for use with VESA display mounts - 100 x 100mm & 75 x 75mm
- Lightweight design, assists manoeuvrability
- Ideal for use in restricted spaces
- Five leg base, yellow colour coding identifies braking castors
- Polymer easyclean work-surface
- Fixed height - 1000mm
- Integral push handle at front
- Power supply holder at rear of unit
- 50mm twin-wheel castors (3 x braking)

### Dimensions (w x d x h)

- Overall - 500 x 500 x 1000mm
- Work Surface - 436 x 413mm (includes handle) at height 1000mm
- Power Supply Holder - 350 x 80 x 90mm (internal)

### Colours

- Base - White / Yellow / Grey
- Upright - White
- Worksurface - White



SMS/VC/FHC

Item	Description	Weight
SMS/VC/FHC	VESA Cart - Compact, Fixed Height, Non-Powered	13.5kg

# VESA Cart - Compact, Non-Powered

## Features

- Suitable for use with VESA display mounts - 100 x 100mm & 75 x 75mm
- Lightweight design, assists manoeuvrability
- Ideal for use in restricted spaces
- Five leg base, yellow colour coding identifies braking castors
- Polymer easyclean work-surface
- Height adjustable using a gas damper (800 - 1050mm)
- Integral push handle at front
- Power supply holder at rear of unit
- 50mm twin-wheel castors (3 x braking)

## Dimensions (w x d x h)

- Overall - 500 x 500 x 800 - 1050mm
- Work Surface - 460 x 413mm (includes handle)
- Power Supply Holder - 350 x 80 x 90mm (internal)

## Colours

- Base - White / Yellow / Grey
- Upright - White
- Worksurface - White



5MS/VC/C

Item	Description	Weight
5MS/VC/C	VESA Cart - Compact, Non-Powered	18.6kg



## VESA Cart - Intermediate, Non-Powered

### Features

- Non-powered cart suitable for use with VESA display mounts (100 x 100mm & 75 x 75mm)
- Height adjustable using a gas damper (833 - 1233mm)
- Four-leg base
- Polymer easy clean work-surface
- Integral push handle at front
- 100mm twin-wheel castors (2 x braking)

### Dimensions (w x d x h)

- Overall - 611 x 660 x 833 - 1233mm
- Work Surface - 550 x 580mm (includes handle)

### Standard Colours

- Base - Grey
- Upright - Grey
- Work Surface - White

### Option / Accessories

- 5AL/KT - Keyboard Tray
- 5AL/KB - Qwerty Keyboard
- 5AL/MO - Mouse
- 5AL/DR - Drawer Unit
- 5AL/24/AIO/PC - 24" AIO PC, 3 Battery Cells, I5, Touch, 8GB, 256GB
- 5AL/AIO/BAT - Battery for AIO PC
- 5AL/AIO/BAT/CH - Battery Charger for AIO PC



5AL/CC/VM  
(Optional AIO PC & Keyboard Tray not Included)

Item	Description	Weight
5AL/CC/VM	VESA Cart - Intermediate, Non-Powered	18.7kg

# VESA Cart - Advanced, Non-Powered

## Features

- Non-powered cart suitable for use with VESA display mounts (100 x 100mm & 75 x 75mm)
- Height adjustable using a pulley system (800 - 1300mm)
- Pull out keyboard tray, can be tilted & features an integrated wrist support. Mouse tray is retractable for right / left hand use
- Scanner, mouse & coiled cable holder
- Bin with integral handle at the rear of the unit
- Four-leg base
- Polymer easy clean work surface
- Integral push handle at front
- 100mm twin-wheel anti-static castors (2 x braking)

## Dimensions (w x d x h)

- Overall - 611 x 727 x 800 - 1300mm
- Work Surface - 550 x 480mm (includes handle)

## Standard Colours

- Base - Grey
- Upright - Grey
- Work Surface - White

## Option / Accessories

- 5AL/KB - Qwerty Keyboard
- 5AL/MO - Mouse
- 5AL/PA - Power Adaptor
- 5AL/RPC - Retractable Power Cable
- 5AL/DR - Drawer Unit
- 5AL/24/AIO/PC - 24" AIO PC, 3 Battery Cells, I5, Touch, 8GB, 256GB
- 5AL/AIO/BAT - Battery for AIO PC
- 5AL/AIO/BAT/CH - Battery Charger for AIO PC



5AL/CC/A/VM  
(Optional AIO PC, Keyboard, Mouse & Scanner not Included)

Item	Description	Weight
5AL/CC/A/VM	VESA Cart - Advanced, Non-Powered	31.0kg

## VESA Cart - Advanced, Powered

### Features

- Powered cart suitable for use with VESA display mounts (100 x 100mm & 75 x 75mm)
- 520Whr power supply
- Battery suitable for powering a small form factor PC, thin client, all in one panel PC or monitor
- Height adjustable using a pulley system (800 - 1300mm)
- Pull out keyboard tray, can be tilted & features an integrated wrist support. Mouse tray is retractable for right / left hand use
- Scanner, mouse & coiled cable holder
- Bin with integral handle at the rear of the unit
- Four leg-base
- Polymer easy clean work-surface
- Integral push handle at front
- 100mm twin-wheel anti-static castors (2 x braking)

### Dimensions (w x d x h)

- Overall - 611 x 727 x 800 - 1300mm
- Work Surface - 550 x 480mm (includes handle)

### Standard Colours

- Base - Grey
- Upright - Grey
- Work Surface - White

### Option / Accessories

- 5AL/KB - Qwerty Keyboard
- 5AL/MO - Mouse
- 5AL/PA - Power Adaptor
- 5AL/RPC - Retractable Power Cable
- 5AL/DR - Drawer Unit
- 5AL/24/MON - 24" Terra Monitor, 12V



5AL/CC/A/PO/VM  
(Optional Monitor, Keyboard & Mouse not Included)

Item	Description	Weight
5AL/CC/A/PO/VM	VESA Cart - Advanced, Powered	37.0kg

## Accessories / Options

### Keyboard Tray

#### Features

- Pull out keyboard tray
- Tilt adjustable & features an integrated wrist support
- Retractable mouse tray, configurable for right / left hand use



Item	Description
5AL/KT	Keyboard Tray

### Qwerty Keyboard

#### Features

- Water-resistant, dust free & antibacterial (IP67)
- Suitable for use with all common disinfectants
- Can be turned off for cleaning
- Antibacterial silicone cover



Item	Description
5AL/KB	QWERTY Keyboard

### Mouse

#### Features

- Scroll wheel
- Water-resistant, dust free & antibacterial (IP67)
- Suitable for use with all common disinfectants



Item	Description
5AL/MO	Mouse

## Accessories / Options

### Power Adaptor

#### Features

- Adaptor to allow connectivity to the hardware



Item	Description
5AL/PA	Power Adaptor

### Retractable Power Cable

#### Features

- Coiled Cable
- Fitted with a UK 3-pin plug



Item	Description
5AL/RPC	Retractable Power Cable

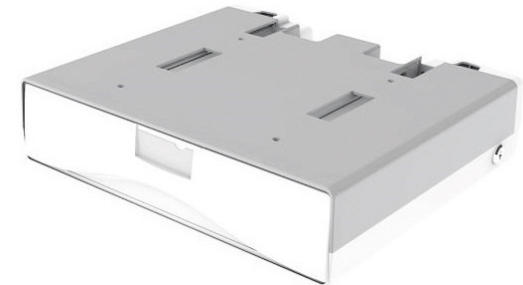
### Drawer Unit

#### Features

- Single drawer
- Supplied with two keys
- Up to two drawers can be fitted to a cart

#### Internal Dimension (w x d x h)

- 399 x 298 x 70mm



Item	Description
5AL/DR	Drawer Unit

# 24" AIO PC, 3 Battery Cells, I5, Touch 8GB, 256 GB

## Features

- Three integrated hot-swappable batteries
- High resolution 24" capacitive touchscreen
- I5 Pentium processor
- Fanless, IP65-rated front panel, IPX2-rated enclosure
- Built-in LED reading light
- HDMI video-out, support up to 4k UHD resolution
- VESA compatibility to maximise installation flexibility (100 x 100mm)
- 8GB Ram
- 256GB Storage
- Microsoft Windows 10
- Display resolution 1920 x 1080
- WLAN, Bluetooth
- 2 USB 2.0 ports, 1 COM port, 1 x HDMI-out, DC-in & DC-out
- AC/DC adaptor
- Full-HD front camera, RFID-reader, smart card reader
- 6.4kg without batteries, 7.9kg including batteries

## Dimensions (w x d x h)

- 24" AIO PC - 564 x 41 x 371mm

## Optional

- 5AL/AIO/BAT/CH - Battery Charger
- 5AL/AO/BAT - Battery



### 5AL/AIO/BAT/CH - Battery Charger

- Can hold upto 6 batteries



VESA Standard Mounting Design

Item	Description	Weight
5AL/24/AIO/PC	24" AIO PC, 3 Battery Cells, I5, Touch, 8GB, 256GB	7.9kg



- |   |                                       |    |                      |    |          |
|---|---------------------------------------|----|----------------------|----|----------|
| 1 | USB 2.0 (582/584)<br>USB 3.0 (581)    | 6  | Ethernet Port        | 11 | USB 3.0  |
| 2 | On/Off Button and<br>Function Buttons | 7  | Reading Light Power  | 12 | Speakers |
| 3 | Speakers                              | 8  | Reading Light        |    |          |
| 4 | DC-Outputs                            | 9  | COM Ports (optional) |    |          |
| 5 | DC-Inputs                             | 10 | HDMI Input           |    |          |

# 24" Terra Monitor, 12V

## Features

- 24" IPS panel technology screen
- 1920 x 1080 Full HD
- Anti-reflective
- LED backlight
- Headphone out
- HDMI DisplayPort 1.2
- HDCP
- Built in speakers
- 100 x 100mm VESA mount
- 12V

## Dimensions (w x d x h)

- 540 x 42 x 322mm



Energy Rating D  
14kWh/1000h



Energy Efficient



1080p Full HD  
Screen



Flicker free / blue  
light function



VESA Standard Mounting Design

HDMI Port

Headphone Port

Item	Description	Weight
5AL/24/MON	24" Terra Monitor, 12V	3.0kg

# Caretray Trolley - Laptop

## Features

- Trolleys suitable for use with laptops
- Suitable for use with Electronic Prescribing & Medicines Administration (EPMA) & Electronic Patient Records (EPR)
- Quick & easy disassembly, assists thorough & deep cleaning
- Fully welded mild steel frame
- Recyclable polypropylene one-piece top & side panels, smooth surfaces & radiused edges assists cleaning (compatible with steam cleaning)
  - Top Panel - Raised edges on three sides provide defined grab points to act as push handles, whilst an integral rim at the front contains spillages (max load 30kg)
  - Side Panels - Incorporate runners with positive stops preventing trays from being accidentally withdrawn (symmetrical design allows tray insertion from either side)
  - Carerails fitted to either side support a wide range of accessories
- Solid grade laminate door & back panel providing security for the contents of the trays
- Two locking options...
  - High Security Bolt Lock - Supplied with two keys
  - Electronic Push Button Lock - Programmable four-digit code
- Trolley pre-configured with the following accessories...
  - Laptop Holder, Removable, Swing Arm
- Translucent, impact-resistant trays & dividers, smooth surfaces & radiused edges assists cleaning (compatible with steam cleaning / high temperature machine washing)
- Trays feature an integral handle with a plastic clip-on label cover (coloured label strips supplied - white, blue, green, yellow & red)
- Each tray supplied with 2 x long & 2 x short dividers
- Max load per tray 5kg
- Polyurethane ring buffers offer protection to both the trolley & fabric of the building
- 100mm polymer castors, 2 off braking
- When not in use, trolleys storing medicines should be secured to the wall using a Security Clamp (see locking & security accessories)

## Dimensions (w x d x h)

- Overall Dimensions - 550 x 550 x 993mm
- Plastic Top - 455 x 455 (internal) at height 968mm
- Trays
  - Shallow Tray - 355 x 405 x 100mm (internal)
  - Deep Tray - 355 x 405 x 150mm (internal)

## Standard Colours

- Paint - Grey White

## Options / Accessories

- Defibrillator Platform - page 61
- Carerail Mounted - page 62
- Laptop Holders - page 68/69
- Castors - page 70
- Trays & Dividers - page 71
- Labels - page 72
- Shelves - page 73



CTLAPTM1/10/3S2D/HSB

High Security Bolt Lock	Electronic Push Button Lock	Description	Weight
CTLAPTM1/10/3S2D/HSB	CTLAPTM1/10/3S2D/EPB	3 x 100mm, 2 x 150mm Trays	39.3kg
CTLAPTM1/10/4S1D/HSB	CTLAPTM1/10/4S1D/EPB	4 x 100mm, 1 x 150mm Trays	39.0kg
CTLAPTM1/10/6S/HSB	CTLAPTM1/10/6S/EPB	6 x 100mm Trays	40.1kg



## Roll-Stand - Patient Monitors / Medical Devices

### Features

- Suitable for use with patient monitors & medical devices
- Mount size - 75 x 75, 89 x 89 & 100 x 100mm
- Lightweight design, assists manoeuvrability
- Five leg base, yellow colour coding identifies braking castors
- Ergonomic handle assists during transportation
- 50mm twin-wheel castors (3 x braking)

### Dimensions (w x d x h)

- Overall - 500 x 500 x 1065mm

### Colours

- Base - White / Yellow / Grey
- Upright - White
- Worksurface - White

### Options

- 5MS/RS/OPBA - Basket, provides storage space for cables, scanners & blood pressure cuffs, 330 x 124 x 160mm (w x d x h)



5MS/RS/1  
Shown with optional basket

Item	Description	Weight
5MS/RS/1	Roll-Stand - Patient Monitors / Medical Devices	7.17kg

# Point of Care Cart - Adjustable Arm

## Features

- Suitable for use with tablets, small screens or devices (0.9-3kg)
- Mount size - 75 x 75 & 100 x 100mm
- Arm allows height & rotation adjustment
- Lightweight design, assists manoeuvrability
- Concealed cable management (within the column)
- Four leg base
- Polymer easyclean work-surface
- Integral push handle at front
- Deep polymer tray
- 75mm polymer castors (2 x braking)

## Dimensions (w x d x h)

- Overall - 510 x 475 x 1280 - 1441mm
- Adjustable Arm - 161mm / 180° (height / angle)
- Work Surface - 343 x 250mm (includes handle)
- Polymer Tray - 343 x 250 x 139mm

## Colours

- Base - Grey
- Upright / Adjustable Arm / Worksurface - White



5MS/PC/AA

Item	Description	Weight
5MS/PC/AA	Point of Care Cart - Adjustable Arm	9.02kg