





# Drug & Medicine Dispensing

Dispensing Trolleys	124
CLIQ® & RFID Solutions	129
Patient Administration Trolleys	130
Drawer Trolleys	132
Tray Trolleys	133
Blister Pack (MDS) Trolleys	134
Nomad® Cassette Trolleys	136
Biodose® & MultiMeds Trolleys	138
Medinox Trolleys	139
Laptop Holders	140
Security Clamp	142
Distribution Trolleys	143



CTDISPM1/10/3S2D/HSB

Item	Description	Weight
<b>High Security Bolt Lock</b>		
CTDISPM1/10/3S2D/HSB	3 x 100mm, 2 x 150mm Trays, High Security Bolt Lock	35.5kg
CTDISPM1/10/4S1D/HSB	4 x 100mm, 1 x 150mm Trays, High Security Bolt Lock	35.2kg
CTDISPM1/10/6S/HSB	6 x 100mm Trays, High Security Bolt Lock	36.3kg

## Caretray Trolley - Dispensing

### Features

- Trolleys suitable for the storage & dispensing of drugs & medicines
- Suitable for use with Electronic Prescribing & Medicines Administration (EPMA) & Electronic Patient Records (EPR)
- Quick & easy disassembly, assists thorough & deep cleaning
- Fully welded mild steel frame, powder coated in a durable epoxy paint (requires no on-site assembly)
- Recyclable polypropylene one-piece top & side panels, smooth surfaces & radiused edges assists cleaning (compatible with steam cleaning)
  - Top Panel - Raised edges on three sides provide defined grab points to act as push handles, whilst an integral rim at the front contains spillages (max load 30kg)
  - Side Panels - Incorporate runners with positive stops preventing trays from being accidentally withdrawn
- Carerails fitted to either side support a wide range of accessories
- Solid grade laminate door & back panel providing security for the contents of the trays
- Two locking options...
  - High Security Bolt Lock - Supplied with two keys
  - Electronic Push Button Lock - Programable four-digit code
- Trolley pre-configured with the following accessories...
  - Waste Bin & Bracket, 8 Litre
- Translucent, impact-resistant trays & dividers, smooth surfaces & radiused edges assists cleaning (compatible with steam cleaning / high temperature machine washing)
- Trays feature an integral handle with a plastic clip-on label cover (coloured labels supplied - white, blue, green, yellow & red)
- 100 / 150mm deep trays, can be subdivided in both length & width using removable dividers (max load 5kg)
- 2 x long & 2 x short dividers supplied with each tray
- Polyurethane ring buffers offer protection to both the trolley & fabric of the building, smooth surfaces assist cleaning
- 100mm polymer castors, 2 off braking
- When not in use, trolleys storing medicines should be secured to the wall using a Security Clamp (see locking & security accessories)

### Dimensions (w x d x h)

- Overall Dimensions - 550 x 550 x 993mm
- Plastic Top - 455 x 455 (internal) at height 968mm
- Trays
  - Shallow Tray - 355 x 405 x 100mm (internal)
  - Deep Tray - 355 x 405 x 150mm (internal)

### Standard Colours

- Paint - Spearmint

Options / Accessories

- Locking & Security - page 60
- Overbridge & Tilt Bins - page 66
- Carerail Mounted - page 68
- Laptop Holders - page 74
- Castors & Ring Buffers - page 76
- Trays, Shelves, Dividers & Labels - page 77



CTDISPM1/10/3S2D/EPB

Item	Description	Weight
<b>Electronic Push Button Lock</b>		
CTDISPM1/10/3S2D/EPB	3 x 100mm, 2 x 150mm Trays, Electronic Push Button Lock	35.5kg
CTDISPM1/10/4S1D/EPB	4 x 100mm, 1 x 150mm Trays, Electronic Push Button Lock	35.2kg
CTDISPM1/10/6S/EPB	6 x 100mm Trays, Electronic Push Button Lock	36.3kg





MT100

Item	Description	Weight
<b>High Security Bolt Lock</b>		
MT100	Small, High Security Bolt Lock	26.0kg
MT110	Medium, High Security Bolt Lock	35.0kg
MT120	Large, High Security Bolt Lock	42.5kg
<b>Electronic Push Button Lock</b>		
MT100CL	Small, Electronic Push Button Lock	26.0kg
MT110CL	Medium, Electronic Push Button Lock	35.0kg
MT120CL	Large, Electronic Push Button Lock	42.5kg

## Dispensing Trolleys - Wooden, Standard Capacity

### Features

- Trolleys suitable for the storage & dispensing of drugs & medicines
- Lockable hinged lids...
  - Upper - Assisted using a gas strut, providing document support
  - Lower - Provides a work area, at height 980mm (max load 4.0kg)
- Two locking options...
  - High Security Bolt Lock - Supplied with two keys
  - Electronic Push Button - Programmable four-digit code
- Hinged work flap provides a work area at height 930mm (max load 2.0kg)
- Lower shelf
- Five tier plastic rack (395mm)
- Two slide out storage / waste bins
- 100mm pressed steel castors
- When not in use, trolley should be secured to the building - see optional MT/1/6F

### Dimensions (w x d x h)

- Overall...
  - Small - 750 x 490 x 1130mm
  - Medium - 890 x 490 x 1130mm
  - Large - 1030 x 525 x 1130mm
- Internal...
  - Small - 530 x 427 x 263mm sloping to 112mm at front
  - Medium - 683 x 427 x 263mm sloping to 112mm at front
  - Large - 805 x 461 x 263mm sloping to 112mm at front

### Standard Colours

- Frame - Grey
- Shelves / Dividers - White
- Cabinet - Spearmint
- Shelf / Flap - Grey

### Options / Accessories

- MT/1/6F - Security Wall Clamp
- ZP005 - Ring Buffers



MT220

## Dispensing Trolleys - Wooden, High Capacity

### Features

- Trolleys suitable for the storage & dispensing of drugs & medicines
- Lockable hinged lids...
  - Upper - Assisted using a gas strut, providing document support
  - Lower - Provides a work area, at height 921mm (max load 4.0kg)
- Two locking options...
  - High Security Bolt Lock - Supplied with two keys
  - Electronic Push Button - Programmable four-digit code
- Hinged work flap provides a work area at height 850mm (max load 2.0kg)
- Lower shelf
- Five tier plastic rack (395mm)
- Two slide out storage / waste bins
- 125mm pressed steel castors
- When not in use, trolley should be secured to the building - see optional MT/1/6F

### Dimensions (w x d x h)

- Overall...
  - Medium - 760 x 560 x 1290mm
  - Large - 905 x 560 x 1290mm
- Internal...
  - Medium - 530 x 461 x 513mm sloping to 137mm at the front
  - Large - 683 x 461 x 513mm sloping to 137mm at the front

### Standard Colours

- Frame - Grey
- Shelves / Dividers - White
- Cabinet - Spearmint
- Shelf / Flap - Grey

### Options / Accessories

- MT/1/6F - Security Wall Clamp

Item	Description	Weight
<b>High Security Bolt Lock</b>		
MT220	Medium, High Security Bolt Lock	42.0kg
MT230	Large, High Security Bolt Lock	50.0kg
<b>Electronic Push Button Lock</b>		
MT220CL	Medium, Electronic Push Button Lock	42.0kg
MT230CL	Large, Electronic Push Button Lock	50.0kg



MT140

## Dispensing Trolleys - Metal, Standard Capacity

### Features

- Trolleys suitable for the storage & dispensing of drugs & medicines
- Lockable hinged lid provides document support
- Fitted with a high security bolt lock (supplied with two keys)
- Hinged writing flap provides a work area at height 907mm (max capacity 2.0kg)
- Lower shelf
- Five tier plastic rack (395mm)
- Two slide out storage / waste bins
- 100mm pressed steel castors
- When not in use, trolley should be secured to the building - see optional MT/1/6F

### Dimensions (w x d x h)

- Overall...
  - Small - 750 x 459 x 1112mm
  - Medium - 891 x 459 x 1112mm
  - Large - 1030 x 492 x 1112mm
- Internal...
  - Small - 489 x 457 x 292mm sloping to 127mm at the front
  - Medium - 706 x 457 x 292mm sloping to 127mm at the front
  - Large - 832 x 490 x 292mm sloping to 127mm at the front

### Standard Colours

- Frame - Grey
- Cabinet - White
- Shelf / Flap - Spearmint

### Options / Accessories

- MT/1/6F - Security Wall Clamp
- ZP005 - Ring Buffers

Item	Description	Weight
MT130	Small, High Security Bolt Lock	22.0kg
MT140	Medium, High Security Bolt Lock	25.0kg
MT150	Large, High Security Bolt Lock	31.0kg

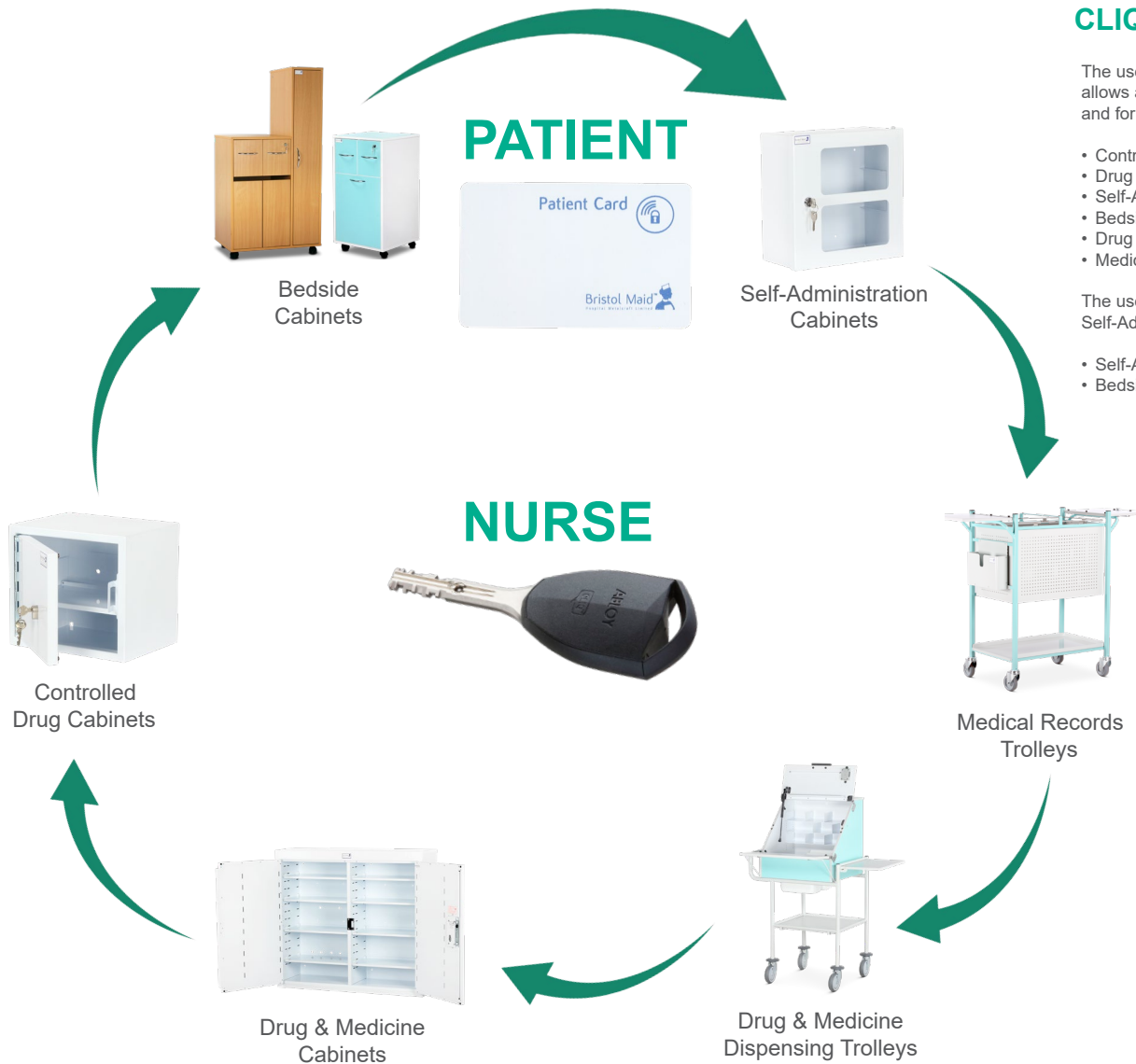
## CLIQ® & RFID Solutions

The use of CLIQ® coupled with unique RFID tag identifiers allows a single key to be used with Medicines Management and for Accessing Patient Records.

- Controlled Drug Cabinets (audit trail available)
- Drug & Medicine Cabinets (audit trail available)
- Self-Administration Cabinets
- Bedside Cabinets
- Drug & Medicine Dispensing Trolleys
- Medical Records Trolleys

The use of RFID cards allows a single card to be used with Self-Administration Schemes.

- Self-Administration Cabinets
- Bedside Cabinets



## Pharmacy Trolleys - Patient Administration

### Features

- Trolleys suitable for the storage & dispensing of drugs & medicines using individual compartments dedicated for each patient
- Two locking options...
  - High Security Bolt Lock - Supplied with two keys
  - Electronic Push Button - Programmable four-digit code
- Supplied with 4 / 8 trays subdivided into equal compartments...
  - 24 Compartment - 4 trays subdivided into 6 equal compartments, each compartment - 190mm x 132mm x 220mm (5.5 Litres). Label holders provided for each compartment
  - 32 Compartment - 8 trays subdivided into 4 equal compartments, each compartment - 192mm x 143mm x 220mm (6.1 Litres). Label holders provided for each compartment
- Upper work surface
- Push handles incorporate integral buffers to offer protection to both the trolley & fabric of the building
- Plastic debris bin & bracket
- 125mm polymer castors
- When not in use, trolley should be secured to the building - see optional MT/1/6F

### Dimensions (w x d x h)

- Single Door - 627 x 579 x 1165mm
- Double Door - 820 x 579 x 1165mm

### Standard Colours

- Paint - Grey
- Work Surface - Spearmint

### Options / Accessories

- MT/1/6F - Security Wall Clamp
- PT/LHR/S - Laptop Holder - Removable, Swing Arm
- PT/LHNR/S - Laptop Holder - Non-Removable, Swing Arm



PTS/HSB/PA24



PTS/EPB/PA24

### Single Door

High Security Bolt Lock	Electronic Push Button Lock	Description	Weight
PTS/HSB/PA24	PTS/EPB/PA24	Patient Administration, 24 Compartments	51.4kg

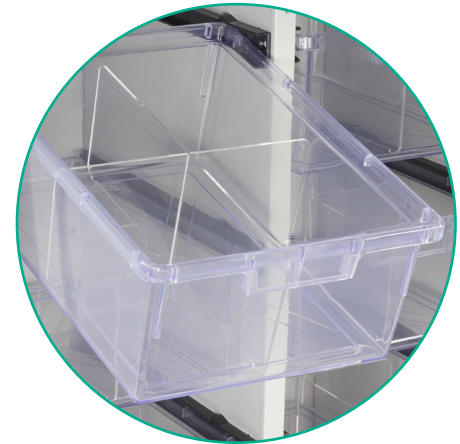
Trays tilt to assist access to contents



PTD/HSB/PA32



PTS/HSB/PA24



PTD/HSB/PA32

## Double Door

High Security Bolt Lock	Electronic Push Button Lock	Description	Weight
PTD/HSB/PA32	PTD/EPB/PA32	Patient Administration, 32 Compartments	68.8kg





PTS/HSB/DR6

## Pharmacy Trolleys - Drawers

### Features

- Trolleys suitable for the storage & dispensing of drugs & medicines using drawers
- Two locking options...
  - High Security Bolt Lock - Supplied with two keys
  - Electronic Push Button - Programmable four-digit code
- Upper work surface
- Push handles incorporate integral buffers to offer protection to both the trolley & fabric of the building
- 3 adjustable door shelves
- Plastic debris bin & bracket
- 125mm polymer castors
- When not in use, trolley should be secured to the building - see optional MT/1/6F

### Dimensions (w x d x h)

- Overall Dimensions - 511 x 542 x 1072mm
- Drawer - 335 x 295 x 113mm (internal)

### Standard Colours

- Paint - Grey
- Work Surface - Spearmint

### Options / Accessories

- MT/1/6F - Security Wall Clamp
- PT/LHR/S - Laptop Holder - Removable, Swing Arm
- PT/LHNR/S - Laptop Holder - Non-Removable, Swing Arm



PTS/EPB/DR6

Item	Description	Weight
PTS/HSB/DR6	High Security Bolt Lock, Six Drawers	53.0kg
PTS/EPB/DR6	Electronic Push Button Lock, Six Drawers	53.0kg





PTD/HSB/LP24

PTS/HSB/LA16

PTD/HSB/A18C12

High Security Bolt Lock	Electronic Push Button Lock	Description	Weight
<b>Single Door</b>			
PTS/HSB/LA16	PTS/EPB/LA16	Sixteen LA Trays	39.0kg
<b>Double Door</b>			
PTD/HSB/A18C12	PTD/EPB/A18C12	Eighteen A & Twelve C Trays	57.0kg
PTD/HSB/LP24	PTD/EPB/LP24	Twenty Four LP Trays	57.0kg

## Pharmacy Trolleys - Trays

### Features

- Trolleys suitable for the storage & dispensing of drugs & medicines using individual patient trays
- Two locking options...
  - High Security Bolt Lock - Supplied with two keys
  - Electronic Push Button - Programmable four-digit code
- Trays supported on adjustable shelves
- Tray Sizes (w x d x h)...
  - LA - 86 x 268 x 57mm (aluminium)
  - A - 85 x 181 x 54mm (plastic)
  - C - 129 x 181 x 54mm (plastic)
  - LP - 115 x 266 x 95mm (plastic)
- Upper work surface
- Push handles incorporate integral buffers to offer protection to both the trolley & fabric of the building
- Adjustable door shelves...
  - Single Door - 3 door shelves
  - Double Door - 6 door shelves
- Plastic debris bin & bracket
- 125mm polymer castors
- When not in use, trolley should be secured to the building - see optional MT/1/6F

### Dimensions (w x d x h)

- Single Door - 511 x 542 x 1072mm
- Double Door - 711 x 568 x 1072mm

### Standard Colours

- Paint - Grey
- Work Surface - Spearmint

### Options / Accessories

- MT/1/6F - Security Wall Clamp
- PT/LHR/S - Laptop Holder - Removable, Swing Arm
- PT/LHNR/S - Laptop Holder - Non-Removable, Swing Arm



PTS/HSB/DR/BP6


PTS/HSB/BP6  
(frames not included)

PTS/HSB/BP4  
(frames not included)

## Single Door

High Security Bolt Lock	Electronic Push Button Lock	Description	Weight
PTS/HSB/BP4	PTS/EPB/BP4	Blister Pack, Four Frames	31.0kg
PTS/HSB/BP6	PTS/EPB/BP6	Blister Pack, Six Frames	38.0kg
PTS/HSB/DR/BP6	PTS/EPB/DR/BP6	Drawer, Blister Pack, Six Frames	39.0kg

## Pharmacy Trolleys - Blister Pack (MDS)

### Features

- Trolleys suitable for the storage & dispensing of drugs & medicines using the blister packed monitored dosage system (MDS)
- Two locking options...
  - High Security Bolt Lock - Supplied with two keys
  - Electronic Push Button - Programmable four-digit code
- Frames supported on either a fixed panel mounted to the inside rear of the trolley or on three adjustable slide out shelves (frames not supplied)
- Upper work surface
- Push handles incorporate integral buffers to offer protection to both the trolley & fabric of the building
- Adjustable door shelves...
  - Single Door - 3 door shelves
  - Double Door - 6 door shelves
- Fold over MDS dispensing surface
- Plastic debris bin & bracket
- 125mm polymer castors
- When not in use, trolley should be secured to the building - see optional MT/1/6F

### Dimensions (w x d x h)

- Single Door - 511 x 542 x 1072mm
- Double Door - 711 x 568 x 1072mm

### Standard Colours

- Paint - Grey
- Work Surface - Spearmint

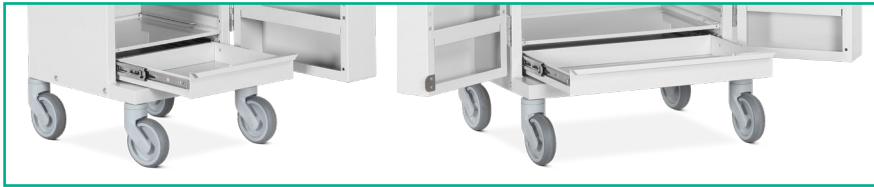
### Options / Accessories

- MT/1/6F - Security Wall Clamp
- PT/LHR/S - Laptop Holder - Removable, Swing Arm
- PT/LHNR/S - Laptop Holder - Non-Removable, Swing Arm



PTS/EPB/BP4

Lower Drawer



PTS/HSB/DR/BP6

PTD/HSB/DR/BP9



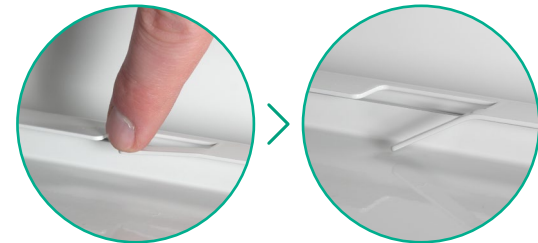
PTD/HSB/BP6  
(frames not included)



PTD/HSB/BP9  
(frames not included)



PTD/HSB/DR/BP9



Tab prevents the shelf from being removed

## Double Door

High Security Bolt Lock	Electronic Push Button Lock	Description	Weight
PTD/HSB/BP6	PTD/EPB/BP6	Blister Pack, Six Frames	38.0kg
PTD/HSB/BP9	PTD/EPB/BP9	Blister Pack, Nine Frames	42.0kg
PTD/HSB/DR/BP9	PTD/EPB/DR/BP9	Drawer, Blister Pack, Nine Frames	46.0kg



PTS/HSB/NC30  
(cassettes not included)

### Single Door

High Security Bolt Lock	Electronic Push Button Lock	Description	Weight
PTS/HSB/NC30	PTS/EPB/NC30	Nomad®, Thirty Cassettes	38.0kg

## Pharmacy Trolleys - Nomad® Cassettes

### Features

- Trolleys suitable for the storage & dispensing of drugs & medicines using the Nomad® cassette monitored dosage system
- Two locking options...
  - High Security Bolt Lock - Supplied with two keys
  - Electronic Push Button - Programmable four-digit code
- Cassettes supported on three adjustable shelves (cassettes not supplied)
- Upper work surface
- Push handles incorporate integral buffers to offer protection to both the trolley & fabric of the building
- Adjustable door shelves...
  - Single Door - 3 door shelves
  - Double Door - 6 door shelves
- Plastic debris bin & bracket
- 125mm polymer castors
- When not in use, trolley should be secured to the building - see optional MT/1/6F

### Dimensions (w x d x h)

- Single Door - 511 x 542 x 1072mm
- Double Door - 711 x 568 x 1072mm

### Standard Colours

- Paint - Grey
- Work Surface - Spearmint

### Options / Accessories

- MT/1/6F - Security Wall Clamp
- PT/LHR/S - Laptop Holder - Removable, Swing Arm
- PT/LHNR/S - Laptop Holder - Non-Removable, Swing Arm



PTS/EPB/NC30



PTD/HSB/NC56  
(cassettes not included)



PTD/EPB/NC56

## Double Door

High Security Bolt Lock	Electronic Push Button Lock	Description	Weight
PTD/HSB/NC56	PTD/EPB/NC56	Nomad®, Fifty Six Cassettes	48.0kg



## Pharmacy Trolleys - Biodose® & MultiMeds



PTD/HSB/BD69  
(trays not included)

PTS/EPB/BD46  
(trays not included)

### Features

- Trolleys suitable for the storage & dispensing of drugs & medicines using the Biodose® & MultiMeds monitored dosage system
- Two locking options...
  - High Security Bolt Lock - Supplied with two keys
  - Electronic Push Button - Programmable four-digit code
- Trays supported on fixed runners (trays not supplied)
- Upper work surface
- Push handles incorporate integral buffers to offer protection to both the trolley & fabric of the building
- Adjustable door shelves...
  - Single Door - 3 door shelves
  - Double Door - 6 door shelves
- Plastic debris bin & bracket
- 125mm polymer castors
- When not in use, trolley should be secured to the building - see optional MT/1/6F

### Dimensions (w x d x h)

- Single Door - 581 x 568 x 1072mm
- Double Door - 812 x 568 x 1072mm

### Standard Colours

- Paint - Grey
- Work Surface - Spearmint

### Options / Accessories

- MT/1/6F - Security Wall Clamp
- PT/LHR/S - Laptop Holder - Removable, Swing Arm
- PT/LHNR/S - Laptop Holder - Non-Removable, Swing Arm

High Security Bolt Lock	Electronic Push Button Lock	Description	Weight
<b>Single Door</b>			
PTS/HSB/BD46	PTS/EPB/BD46	Biodose® & MultiMeds, 46 Trays	37.3kg
<b>Double Door</b>			
PTD/HSB/BD69	PTD/EPB/BD69	Biodose® & MultiMeds, 69 Trays	52.0kg

## Pharmacy Trolleys - Medinox

### Features

- Trolleys suitable for the storage & dispensing of drugs & medicines using the Medinox monitored dosage system (compatible with 7 x 4 medi-trays)
- Two locking options...
  - High Security Bolt Lock - Supplied with two keys
  - Electronic Push Button - Programmable four-digit code
- Trays supported on fixed runners (trays not supplied)
- Upper work surface
- Push handles incorporate integral buffers to protect the fabric of the building
- Adjustable door shelves
  - Single Door - 3 door shelves
  - Double Door - 6 door shelves
- Plastic debris bin & bracket
- 125mm polymer castors offer reduced rolling resistance making the trolley easier to manoeuvre, lowers noise levels, whilst smooth surfaces assist cleaning
- When not in use, trolley should be secured to the building - see optional MT/1/6F

### Dimensions (w x d x h)

- Single Door - 581 x 568 x 1072mm
- Double Door - 812 x 568 x 1072mm

### Standard Colours

- Paint - Grey
- Work Surface - Spearmint

### Options / Accessories

- MT/1/6F - Security Wall Clamp
- PT/LHR/S - Laptop Holder - Removable, Swing Arm
- PT/LHNR/S - Laptop Holder - Non-Removable, Swing Arm



PTS/EPB/MX40



PTD/EPB/MX60  
(trays not included)

PTS/HSB/MX40  
(trays not included)

High Security Bolt Lock	Electronic Push Button Lock	Description	Weight
<b>Single Door</b>			
PTS/HSB/MX40	PTS/EPB/MX40	Medinox, 40 Trays	41.4kg
<b>Double Door</b>			
PTD/HSB/MX60	PTD/EPB/MX60	Medinox, 60 Trays	55.2kg





PT/LHR/S

## Laptop Holder - Removable, Swing Arm

### Features

- Three section swing arm offering height, rotation & angle adjustment
- Compatible with the PT range of single & double door pharmacy trolleys
- Fitted to an upright bolted to the rear left-hand corner of the trolley (upright & holder supplied for customer to fit)
- Laptop supported in a cradle, fitted with adjustable wing arms
- Laptop can be secured using a security clamp (supplied)\*
- Adjustable to accept laptops 280 - 435 x 22mm (w x h)
- Maximum capacity 2.0kg
- Design allows easy access to laptop ports

\*Not compatible with Dell laptops using the N17 wedge lock system

### Standard Colours

- Paint - Grey

Item	Description	Weight
PT/LHR/S	Removable, Swing Arm	4.7kg

## Laptop Holder - Non-Removable, Swing Arm

### Features

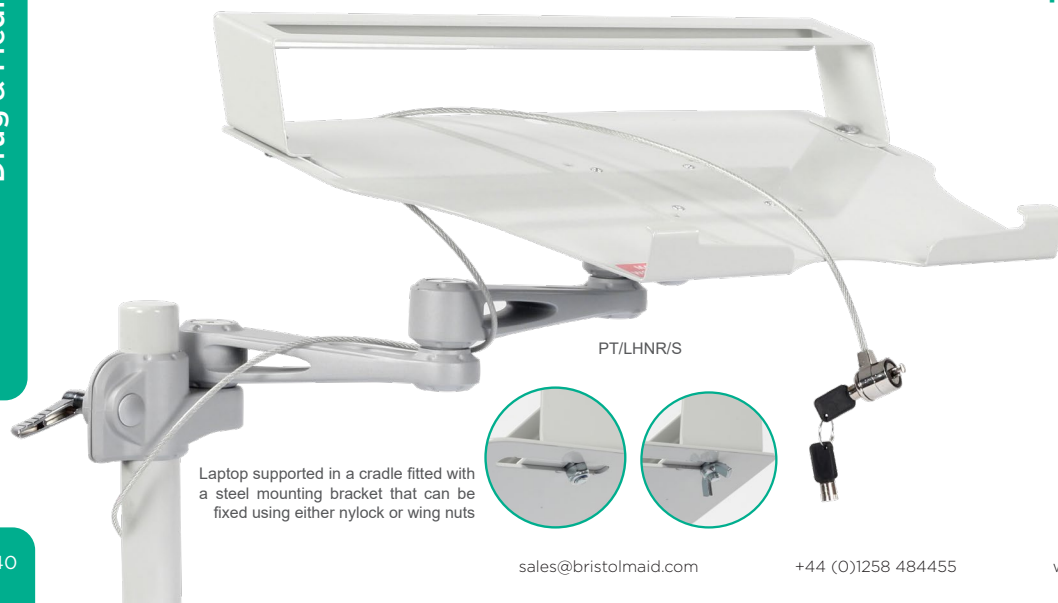
- Three section swing arm offering height, rotation & angle adjustment
- Compatible with the PT range of single & double door pharmacy trolleys
- Fitted to an upright bolted to the rear left-hand corner of the trolley (upright & holder supplied for customer to fit)
- Laptop supported in a cradle fitted with a steel mounting bracket, fixed using either nyloc or wing nuts
- Laptop can be secured using a security clamp (supplied)\*
- Adjustable to accept laptops 280 - 435 x 22mm (w x h)
- Maximum capacity 2.0kg
- Design allows easy access to laptop ports

\*Not compatible with Dell laptops using the N17 wedge lock system

### Standard Colours

- Paint - Grey

Item	Description	Weight
PT/LHNR/S	Non-Removable, Swing Arm	5.0kg



PT/LHNR/S

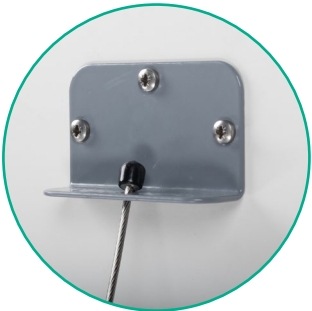
Laptop supported in a cradle fitted with a steel mounting bracket that can be fixed using either nylock or wing nuts



PTD/EPB/DR6/PT/LHR/S



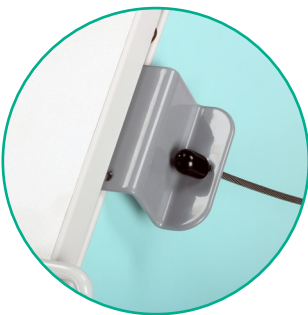
### Fitting Your Security Clamp



Securely fasten one end of the clamp to the wall



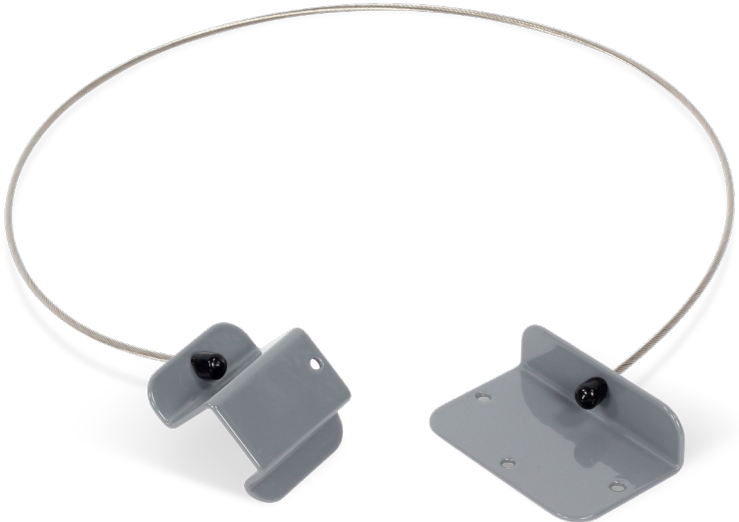
The 'hook shaped' end is trapped by the door when closed & locked



### Security Clamp

#### Features

- Allows the trolley to be secured to the 'fabric of the building'
- Requires no additional keys, utilises the trolleys own locking system
- One end is secured to the wall, the 'hook shaped' end is trapped by the door/lid of the trolley when closed & locked
- Recommended wall fitting height approx 1000mm



#### Important Note - Security Clamps

It is a requirement that when the trolley is not in use it should be secured to the 'fabric of the building'. Not only does this prevent casual theft, i.e. trolleys being pushed to an isolated area & broken into, but also encourages good nursing practice, giving the trolley a "permanent home".  
"Safe & Secure Handling of Medicines - Royal Pharmaceutical Society, GB-March 2005"

Item	Description	Cable Length	Weight
MT/1/6F	Security Clamp	950mm	0.75kg

## Distribution Trolleys - Lockable Drawers

### Features

- Trolleys suitable for the distribution of drugs & medicines from pharmacy to the ward & also with self-administration / patient own drug schemes
- Provides secure drug delivery using drawers which when locked are securely fastened to the trolley
- Drawers are fitted with a CAM lock (supplied with two keys)
- Max load per drawer 3kg
- Supplied as standard with locks to differ, allowing each ward to have its own key & be responsible for removing the drawer from the trolley (remaining key should be kept at the pharmacy)
- Master keys available (additional cost)
- Upper work surface
- Push handles at either end
- Document pocket fitted to end of trolley
- Low level corner bumpers offer protection to both the trolley & fabric of the building
- 125mm pressed steel castors, 2 off braking

### Dimensions (w x d x h)

- SA005 - 1026 x 523 x 1002mm
- SA025 - 1180 x 523 x 1002mm
- Drawer - 145 x 423 x 230mm (Internal)

### Standard Colours

- Paint - Grey
- Work Surface - Spearmint

### Options / Accessories

- Master Keys



SA005

Item	Description	Weight
SA005	Distribution Trolley - 15 Drawers	49.0kg
SA025	Distribution Trolley - 18 Drawers	56.0kg