

Resuscitation Trolleys & Carts

Resuscitation Trolleys - Mild Steel	302
Caretray Trolley - Resuscitation	308
Resuscitation Carts - Polymer, Metro Lifeline™	310
Resuscitation Carts - Polymer, Metro Flexline™	312
Airways / Difficult Intubation Trolley - Mild Steel	313
Caretray Trolley - Airways / Difficult Intubation	314

Resuscitation Trolleys - Mild Steel

Features

- Popular resuscitation trolley
- Drawer contents are secured when the lower cupboard is closed (security seal compatible)
- Upper drawer supplied with a plastic drawer liner, with dividers
- Recessed liquid retaining stainless steel work surface (usable 630 x 445)
- Lift up work flap (usable 305 x 455mm)
- Two hook infusion pole mounted to rear of trolley
- Low level bumper bar
- Push handles one end
- 125mm pressed steel castors

Dimensions (w x d x h)

- Drawers (internal)
 - 70mm - 600 x 430 x 70mm
 - 96mm - 600 x 430 x 96mm
 - 155mm - 600 x 430 x 155mm
- Lower Cupboard (internal)
 - 625 x 475 x 295mm

Standard Colours

- Paint - Red
- Lift Up Flap - White



Lift up work flap



WT210

Item	Description	Overall Dimensions (w x d x h)	Weight
WT200	2 x 70mm & 1 x 155mm Deep Drawers, Lower Cupboard	825 x 575 x 999mm	74.0kg
WT210	3 x 96mm Deep Drawers, Lower Cupboard	825 x 575 x 999mm	75.1kg
WT250	4 x 70mm & 1 x 155mm Deep Drawers, Lower Cupboard	825 x 575 x 1165mm	86.0kg



WT250/CYL/D/E
shown with optional cylinder holder WT/CYL/D/E

Drop down cupboard door prevents drawers from being opened. Can be secured using security seals.



WT200

Options / Accessories

Adjustable Defibrillator Platform

Features

- Defibrillator supported on a 365mm wide platform & is held securely in place using a clamp (adjusts using a handwheel 205 - 380mm)
- Platform mounted on an arm that swings 90 degrees from the worksurface & can be locked in position using a tensioning knob (rotates 360 degrees)
- Base of platform sits 150mm above the top of the trolley
- Fitted to the rear left-hand side of the trolley
- Maximum capacity 6kg
- Factory fitted

Dimensions (w x d x h)

- Overall Dimensions - 477 x 365 x 642mm (increases overall height by 185mm)

Standard Colours

- Paint - Grey White



WT/DEFIB

Item	Description	Weight
WT/DEFIB	Adjustable Defibrillator Platform	5.5kg

Suction Pump Shelf

Features

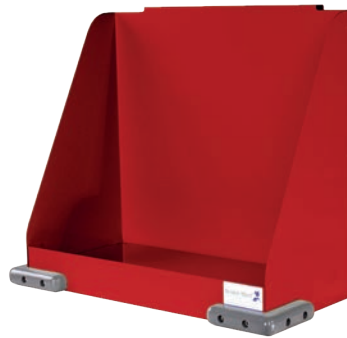
- Provides an area 415 x 200mm (w x d)
- 30mm upstand at front of shelf
- Floor to base of shelf at height - 260mm
- Corner bumpers offer protection to both the trolley & fabric of the building
- Maximum capacity 15kg
- Factory fitted

Dimensions (w x d x h)

- Overall Dimensions - 420 x 205 x 380mm

Standard Colours

- Paint - Red



WT/SPS

Item	Description	Weight
WT/SPS	Suction Pump Shelf	5.0kg

Cardiac Board

Features

- Solid polyethylene cardiac board
- Positioned at the rear of the trolley for easy access
- Factory fitted

Dimensions (w x d x h)

- Overall Dimensions - 500 x 400 x 17mm



WT/CBOARD

Item	Description	Weight
WT/CBOARD	Cardiac Board	1.5kg

Cylinder Holders

Features

- WT/CYL/D/E compatible with AD, CD, D, DD, PD, RD, ZD & E cylinders, max diameter 100mm
- WT/CYL/F compatible with F, LF, VF, HX & ZX cylinders, max diameter 145mm
- Maximum two-cylinder holders per trolley



WT/CYL/F



WT/CYL/D/E

Item	Description	Weight
WT/CYL/D/E	Cylinder Holder - AD, CD, D, DD, PD, RD, ZD & E Size	3.0kg
WT/CYL/F	Cylinder Holder - F, LF, VF, HX & ZX Size	3.4kg

Drawer Tidy

Features

- Plastic drawer liner with removable dividers
- One tidy supplied as standard with each trolley



Item	Description	Weight
WT/DT	Drawer Tidy	1.6kg

Four Gang Socket

Features

- Switched & fused four gang socket
- Supplied with 3 metres of beige cable & fitted with a UK 3 pin plug
- Fitted to the rear of the trolley, complete with a cleat to secure the cable when not in use
- Factory fitted



Item	Description	Weight
E/SOCKET/4	Four Gang Socket	1.4kg

Options / Accessories

Guard Rail

Features

- Stainless steel guard rail
- Increases the height of the trolley by 60mm
- Factory fitted

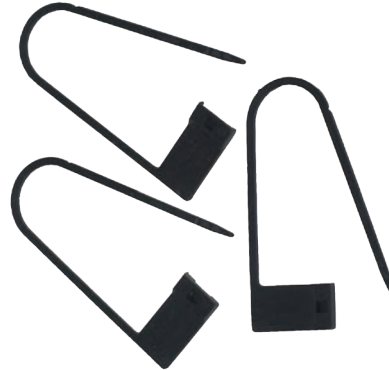


Item	Description	Weight
G/RAIL-C	Guard Rail	1.5kg

Security Seals

Features

- Snap on plastic security
- Pack of 100



Item	Description
2PLCO026	Security Seals

Heavy Duty Castors

Features

- 125mm heavy duty pressed steel castors
- Offers additional cushioning, lowering noise levels
- Factory fitted



Item	Description	Weight
C012	2 x Braking, 2 x Non-Braking (set of 4)	5.0kg

Other products that you may be interested in...

See Pages 286 & 290

Procedure Trolleys & Carts - Caretray



CTPLASM2/10/6S4D



CTCRITM1/10/3S2D/EPB

Caretray Trolley - Resuscitation

Features

- Trolleys suitable for use with Resuscitation
- Quick & easy disassembly, assists thorough & deep cleaning
- Fully welded mild steel frame
- Recyclable polypropylene one-piece top & side panels, smooth surfaces & radiused edges assists cleaning (compatible with steam cleaning)
 - Top Panel - Raised edges on three sides provide defined grab points to act as push handles, whilst an integral rim at the front contains spillages (max load 30kg)
 - Side Panels - Incorporate runners with positive stops preventing trays from being accidentally withdrawn
- Carerails fitted to either side support a wide range of accessories
- Solid grade laminate door & back panel providing security for the contents of the trays
- Door fitted with a security seal lock (security seal compatible)
- Trolley pre-configured with the following accessories...
 - Cylinder Holder, C/CD/D
 - Glove / Mask Box Holder, One Box
- Translucent, impact-resistant trays & dividers, smooth surfaces & radiused edges assists cleaning (compatible with steam cleaning / high temperature machine washing)
- Trays feature an integral handle with a plastic clip-on label cover (coloured label strips supplied - white, blue, green, yellow & red)
- Each tray supplied with 2 x long & 2 x short dividers
- Max load per tray 5kg
- Polyurethane ring buffers offer protection to both the trolley & fabric of the building
- 100mm polymer castors, 2 off braking

Dimensions (w x d x h)

- Overall Dimensions - 550 x 550 x 993mm
- Plastic Top - 455 x 455 (internal) at height 968mm
- Trays
 - Shallow Tray - 355 x 405 x 100mm (internal)
 - Deep Tray - 355 x 405 x 150mm (internal)

Standard Colours

- Paint - Red

Options / Accessories

- Defibrillator Platform - page 61



CTRESUSM1/10/3S2D/SS

Item	Description	Weight
CTRESUSM1/10/3S2D/SS	3 x 100mm, 2 x 150mm Trays	38.3kg
CTRESUSM1/10/4S1D/SS	4 x 100mm, 1 x 150mm Trays	38.0kg
CTRESUSM1/10/6S/SS	6 x 100mm Trays	39.1kg

Overbridge

Features

- Fixes onto the rear uprights of the trolley
- Provides a fixing location for tilt bins (order separately)
- Factory fitted

Standard Colours

- Paint - Grey White



CTRESUM1/10/3S2D/SS
shown with Overbridge & Tilt Bins



Item	Description	Weight
CT/OB/MS	Overbridge, Mild Steel	2.0kg

Tilt Bins

Features

- Available with 4, 5 or 6 compartments
- Clear bins provide visible storage & assists organisation
- Bins tilt to 45o allowing easy access of contents, & can be removed to assist refilling / cleaning
- Label holder for easy identification
- Retaining bar secures bins in place, preventing from tipping forward during transit
- Supplied with a mild steel mounting

Dimensions (w x d x h)

Compartment Dimensions

- TBIN4/MS - 143 x 127 x 190mm
- TBIN5/MS - 108 x 95 x 146mm
- TBIN6/MS - 89 x 67 x 95mm

Standard Colours

- Plastic - Grey
- Paint - Grey White



45° Angle Tilt



Label Holder



Top: TBIN6/MS
Middle: TBIN5/MS
Bottom: TBIN4/MS

Item	Description	Overall Dimensions (w x d x h)	Weight
TBIN4/MS	Four Compartment	600 x 171 x 207mm	2.3kg
TBIN5/MS	Five Compartment	600 x 135 x 164mm	1.6kg
TBIN6/MS	Six Compartment	600 x 93 x 113mm	0.9kg

Resuscitation Carts - Polymer, Metro Lifeline™

Features

- Range of pre-configured emergency carts
- Lightweight polymer construction with smooth rounded corners to assist cleaning
- Incorporates Microban® offering antimicrobial protection
- Single seal mechanism secures the top compartment, drawers & tilt-out side bins (security seal compatible)
- Top storage compartment features a clear removable cover, & provides instant access to first-line equipment
- Defibrillator platform on swing arm adjusts to accommodate various models
- Full extension lightweight polymer drawers, depths 76, 152, 229 & 305mm (max load 7 - 20kg per drawer)
- Ergonomic handle with fifth wheel steering provides maximum control, when attending an emergency situation
- Two tone colour keyway
- 127mm polymer castors, 2 off braking

Dimensions (w x d x h)

- Drawers (internal)
 - 76mm - 514 x 432 x 76mm
 - 152mm - 514 x 432 x 152mm
 - 229mm - 514 x 432 x 229mm
 - 305mm - 514 x 432 x 305mm

Standard Colours

- Body - Blue
- Drawers - Light Taupe / Code Blue

Options / Accessories

- 8FL190 - Drawer Label Holders (x 10)



Drawer Label Holders



8LECCRP4
(defibrillator not included)

Item	Description	Overall Dimensions (w x d x h)	Weight
8LECCRP2	1 x 76mm, 3 x 152mm Drawers	965 x 575 x 984mm	84.0kg
8LECCRP3	2 x 76mm, 1 x 152mm, 1 x 229mm Drawers	965 x 575 x 984mm	88.0kg
8LECCRP4	2 x 76mm, 1 x 152mm, 1 x 305mm Drawers	965 x 575 x 1070mm	87.0kg



(defibrillator not included)



	8LECCRP2	8LECCRP3	8LECCRP4
Top Cavity Tray		✓	
Locking Side Bin (x 3)		✓	✓
Waste Basket (28 Litre)	✓		
Lockable Sharps Container	✓		
Adjustable Defibrillator Platform	✓	✓	✓
Suction Pump Shelf		✓	
Backboard (Front Fitting)		✓	✓
Backboard (Rear Fitting)	✓		
Oxygen Cylinder Holder	✓	✓	✓
Two Hook Infusion Pole	✓	✓	✓
Storage Bin	✓	✓	✓
Plastic Security Seals (x 100)	✓	✓	✓

Resuscitation Carts - Polymer, Metro Flexline™

Features

- Lightweight polymer construction with smooth rounded corners to assist cleaning
- Incorporates Microban® offering antimicrobial protection
- Upper work surface provides a writing surface / space for preparation work
- Single seal mechanism secures the drawers (security seal compatible)
- Full extension lightweight polymer drawers, depths 76, 152 & 229mm (max load 7 - 20kg per drawer)
- Two tone colour keyway
- 127mm polymer castors, 2 x directional & 2 x total lock

Dimensions (w x d x h)

- Overall Dimensions - 819 x 568 x 914mm
- Drawers (internal)
 - 76mm - 514 x 432 x 57mm
 - 152mm - 514 x 432 x 133mm
 - 229mm - 514 x 432 x 210mm

Standard Colours

- Body - Light Taupe
- Drawers - Light Taupe / Red

Options / Accessories

- 8FL141 - 76mm Egg Crate Style Drawer Divider Kit (10 x Vertical, 5 x Horizontal)
- 8FL142 - 152mm Egg Crate Style Drawer Divider Kit (10 x Vertical, 5 x Horizontal)
- 8FL190 - Drawer Label Holders (x 10)
- 8FL234 - 100mm Diameter Oxygen Cylinder Holder
- 8FL315 - Two Hook Infusion Pole
- 8LEEC320 - Plastic Security Seals (x 100)
- 8LEEC304 - Defibrillator Platform



8FL21P3369
(Fitted with optional two hook infusion pole, oxygen cylinder holder & defibrillator platform. Defibrillator not included)

Item	Description	Weight
8FL21P3369	2 x 76mm, 1 x 152mm, 1 x 229mm Drawers	68.0kg

Airways / Difficult Intubation Trolley - Mild Steel

Features

- Recessed liquid retaining top
- Available as non-locking or fitted with a tamper evident panel to secure the contents of the drawers (security seal compatible)
- 135mm deep drawers, fitted on full extension glides (max load 30kg per drawer)
- Carerails fitted to L/H side support a wide range of accessories
- Low level corner bumpers protect the fabric of the building
- 80mm pressed steel castors, 2 off braking

Dimensions (w x d x h)

- Overall - 615 x 500 x 915mm
- Drawers - 480 x 375 x 135mm (internal)

Standard Colours

- Paint - White

Options / Accessories

- Carerail Mounted - page 62



MW015 Tamper Evident Panel



MW010

Item	Description	Weight
MW010	5 x 125mm Drawers, Non-Locking	55.0kg
MW015	5 x 125mm Drawers, Tamper Evident Panel	57.0kg

Caretray Trolley - Airways / Difficult Intubation

Features

- Trolleys suitable for use with Airways / Difficult Intubation
- Quick & easy disassembly, assists thorough & deep cleaning
- Fully welded mild steel frame
- Recyclable polypropylene one-piece top & side panels, smooth surfaces & radiused edges assists cleaning (compatible with steam cleaning)
 - Top Panel - Raised edges on three sides provide defined grab points to act as push handles, whilst an integral rim at the front contains spillages (max load 30kg)
 - Side Panels - Incorporate runners with positive stops preventing trays from being accidentally withdrawn
- Carerails fitted to either side support a wide range of accessories
- Solid grade laminate door & back panel providing security for the contents of the trays
- Door fitted with a security seal lock (security seal compatible)
- Trolley pre-configured with the following accessories...
 - Alcohol Gel Holder
 - Airway Tube Holder
 - Glove / Mask Box Holder, One Box
- Translucent, impact-resistant trays & dividers, smooth surfaces & radiused edges assists cleaning (compatible with steam cleaning / high temperature machine washing)
- Trays feature an integral handle with a plastic clip-on label cover (coloured label strips supplied - white, blue, green, yellow & red)
- Each tray supplied with 2 x long & 2 x short dividers
- Max load per tray 5kg
- Polyurethane ring buffers offer protection to both the trolley & fabric of the building
- 100mm polymer castors, 2 off braking

Dimensions (w x d x h)

- Overall Dimensions - 550 x 550 x 993mm
- Plastic Top - 455 x 455 (internal) at height 968mm
- Trays
 - Shallow Tray - 355 x 405 x 100mm (internal)
 - Deep Tray - 355 x 405 x 150mm (internal)

Standard Colours

- Paint - Red

Options / Accessories

- Locking & Security - page 54
- Overbridge & Tilt Bins - page 60
- Defibrillator Platform - page 61
- Carerail Mounted - page 62
- Laptop Holders - page 68
- Castors - page 70
- Trays & Dividers - page 71
- Labels - page 72
- Shelves - page 73



CTAIRWM1/10/3S2D/SS

Item	Description	Weight
CTAIRWM1/10/3S2D/SS	3 x 100mm, 2 x 150mm Trays	38.6kg
CTAIRWM1/10/4S1D/SS	4 x 100mm, 1 x 150mm Trays	38.3kg
CTAIRWM1/10/6S/SS	6 x 100mm	39.4kg

Other products that you may be interested in...

See Pages 294 & 299

Procedure Trolleys & Carts

