



Shelving & Racking Solutions

| | |
|-----------------------------------|-----|
| Polymer Racking - MetroMax I® | 414 |
| Polymer Racking - MetroMax Q® | 416 |
| Zinc Chrome Racking - Olympic® | 418 |
| High Density Storage - Top-Track® | 420 |
| High Density Storage - qwikTRAK® | 421 |
| Sterile Container Storage | 422 |

Polymer Racking - MetroMax I®

Features

- Corrosion proof polymer shelving & racking system
- Polymer posts
- Polymer shelves with stainless steel corners & a patented no tools assembly, adjustable in 25mm increments
- Removable easy to clean polymer shelf mats (will fit most dishwashers) available as...
 - Grid Shelves - Open grid design allowing for the free circulation of air, improved visibility & light penetration
 - Solid Shelves - Solid design offering a tear free surface, ideal for the storage of sterilised DIN/ISO trays within theatres
- Microban® product protection inhibits growth of bacteria & aids infection control
- Available as stationary or mobile units...
 - Stationary - Fitted with adjustable feet to allow levelling on uneven floors
 - Mobile - Fitted with 125mm swivel / braking castors
- Rack / unit capacity...
 - Stationary - 907kg
 - Mobile - 339kg
- Optional label holders, shelf dividers & ledges
- Lifetime anti-corrosion warranty
- Supplied for self-assembly
- Can be supplied pre-assembled, please ask for a quote



Solid Shelves

Stationary Units

| Shelf Size (w x d) | 4 Shelves - 1,590mm High | | 5 Shelves - 1,895mm High | |
|--------------------|--------------------------|---------------|--------------------------|---------------|
| | Grid Shelves | Solid Shelves | Grid Shelves | Solid Shelves |
| 914 x 610mm | 8MX536SG | 8MX536SS | 85MX536SG | 85MX536SS |
| 1066 x 610mm | 8MX546SG | 8MX546SS | 85MX546SG | 85MX546SS |
| 1219 x 610mm | 8MX556SG | 8MX556SS | 85MX556SG | 85MX556SS |
| 1524 x 610mm | 8MX566SG | 8MX566SS | 85MX566SG | 85MX566SS |

Mobile Units

| Shelf Size (w x d) | 4 Shelves - 1,730mm High | | 5 Shelves - 2,035mm High | |
|--------------------|--------------------------|---------------|--------------------------|---------------|
| | Grid Shelves | Solid Shelves | Grid Shelves | Solid Shelves |
| 914 x 610mm | 8MX536MG | 8MX536MS | 85MX536MG | 85MX536MS |
| 1066 x 610mm | 8MX546MG | 8MX546MS | 85MX546MG | 85MX546MS |
| 1219 x 610mm | 8MX556MG | 8MX556MS | 85MX556MG | 85MX556MS |
| 1524 x 610mm | 8MX566MG | 8MX566MS | 85MX566MG | 85MX566MS |



85MX556SG



8MX556SG

Room Design & Installation Service Available
Contact us for more information

Label Holders

Features

- Allows for clear identification of items
- Snaps onto shelf edge
- Accepts most commercial labels

Dimensions (w x h)

- 102 x 27mm



| Item | Description | Weight |
|---------|--------------|--------|
| 89989PX | Label Holder | 0.01kg |

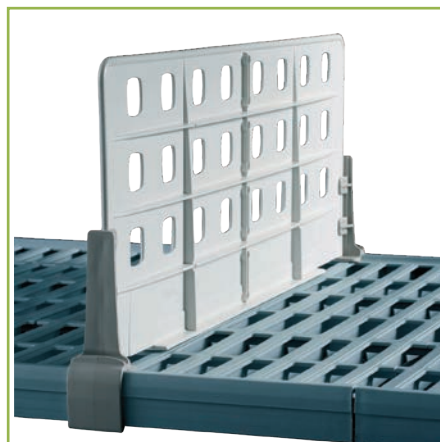
Shelf Divider

Features

- Corrosion proof polymer shelf divider (height 200mm)
- Use to create organised compartments or simply separate shelf contents
- Easily repositioned on grid & solid shelves
- Easy to clean

Dimensions (w x h)

- 610 x 200mm



| Item | Description | Weight |
|----------|---------------|--------|
| 8MXD24-8 | Shelf Divider | 0.7kg |

Stackable Shelf Ledges

Features

- Corrosion proof stackable shelf ledge (height 51mm)
- Prevents larger items from protruding or falling
- Compatible with grid & solid shelves
- Easy to clean



| Item | Description | Weight |
|-------------------|---------------------|--------|
| Side Ledge | | |
| 8MXLS24-2S | Side Ledge - 610mm | 0.2kg |
| Rear Ledge | | |
| 8MXL36-2S | Rear Ledge - 914mm | 0.4kg |
| 8MXL42-2S | Rear Ledge - 1066mm | 0.6kg |
| 8MXL48-2S | Rear Ledge - 1219mm | 0.6kg |
| 8MXL60-2S | Rear Ledge - 1524mm | 0.8kg |

Polymer Racking - MetroMax Q®

Features

- Epoxy / polymer shelving & racking system
- Epoxy coated shelves & posts with a patented no tools lever shelf release mechanism, adjustable in 25mm increments
- Removable easy to clean polymer open grid shelf mats (will fit most dishwashers)
- Open grid design allowing for the free circulation of air, improved
 - visibility & light penetration
- Microban® product protection inhibits growth of bacteria & aids infection control
- Available as stationary or mobile units...
 - Stationary - Fitted with adjustable feet to allow levelling on uneven floors
 - Mobile - Fitted with 125mm swivel / braking castors
- Rack / unit capacity...
 - Stationary - 907kg
 - Mobile - 339kg
- Optional label holders, shelf dividers & ledges
- Anti-corrosion warranty
 - Frame & Posts - 15 years
 - Shelf Mats - Lifetime
- Supplied for self-assembly
- Can be supplied pre-assembled, please ask for a quote



Open Grid Shelves

Stationary Units

| Shelf Size (w x d) | 4 Shelves - 1,590mm High | 5 Shelves - 1,895mm High |
|--------------------|--------------------------|--------------------------|
| 914 x 610mm | 8Q536G2 | 85Q537G2 |
| 1066 x 610mm | 8Q546G2 | 85Q547G2 |
| 1219 x 610mm | 8Q556G2 | 85Q557G2 |
| 1524 x 610mm | 8Q566G2 | 85Q567G2 |

Mobile Units

| Shelf Size (w x d) | 4 Shelves - 1,730mm High | 5 Shelves - 2,035mm High |
|--------------------|--------------------------|--------------------------|
| 914 x 610mm | 8Q536G2M | 85Q537G2M |
| 1066 x 610mm | 8Q546G2M | 85Q547G2M |
| 1219 x 610mm | 8Q556G2M | 85Q557G2M |
| 1524 x 610mm | 8Q566G2M | 85Q567G2M |



85Q567G2



8Q566G2M



Room Design & Installation Service Available
Contact us for more information

Label Holders

Features

- Allows for clear identification of items
- Snaps onto shelf edge
- Accepts most commercial labels

Dimensions (w x h)

- 102 x 27mm



| Item | Description | Weight |
|--------|--------------|--------|
| 8Q04LH | Label Holder | 0.01kg |

Shelf Divider

Features

- Corrosion proof polymer shelf divider (height 200mm)
- Use to create organised compartments or simply separate shelf contents
- Easily repositioned on grid & solid shelves
- Easy to clean

Dimensions (w x h)

- 610 x 200mm



| Item | Description | Weight |
|----------|---------------|--------|
| 8MQD24-8 | Shelf Divider | 0.7kg |

Stackable Shelf Ledges

Features

- Corrosion proof stackable shelf ledge (height 51mm)
- Prevents larger items from protruding or falling
- Compatible with grid & solid shelves
- Easy to clean

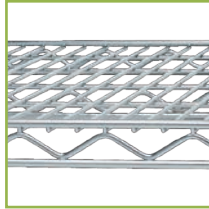


| Item | Description | Weight |
|-------------------|---------------------|--------|
| Side Ledge | | |
| 8MQLS24-2S | Side Ledge - 610mm | 0.2kg |
| Rear Ledge | | |
| 8MQL24-2S | Rear Ledge - 610mm | 0.2kg |
| 8MQL36-2S | Rear Ledge - 914mm | 0.4kg |
| 8MQL42-2S | Rear Ledge - 1066mm | 0.6kg |
| 8MQL48-2S | Rear Ledge - 1219mm | 0.6kg |
| 8MQL60-2S | Rear Ledge - 1524mm | 0.8kg |

Zinc Chrome Racking - Olympic®

Features

- Zinc chrome shelving & racking system
- Chromate posts & shelves with a patented no tools tapered split sleeve system that snaps together on each post, adjustable in 25mm increments
- Available as stationary or mobile units...
 - Stationary - Fitted with adjustable feet to allow levelling on uneven floors
 - Mobile - Fitted with 125mm swivel / braking castors
- Rack / unit capacity...
 - Stationary - 907kg
 - Mobile - 339kg
- Optional label holders, shelf dividers & ledges
- 1-year anti-corrosion warranty
- Supplied for self-assembly
- Can be supplied pre-assembled, please ask for a quote



Zinc Chrome Shelves



80966C



80966CM

Stationary Units

| Shelf Size (w x d) | 4 Shelves - 1,590mm High | 5 Shelves - 1,895mm High |
|--------------------|--------------------------|--------------------------|
| 914 x 610mm | 80536C | 850537C |
| 1066 x 610mm | 80546C | 850547C |
| 1219 x 610mm | 80556C | 850557C |
| 1524 x 610mm | 80966C | 850967C |

Mobile Units

| Shelf Size (w x d) | 4 Shelves - 1,730mm High | 5 Shelves - 2,035mm High |
|--------------------|--------------------------|--------------------------|
| 914 x 610mm | 80536CM | 850537CM |
| 1066 x 610mm | 80546CM | 850547CM |
| 1219 x 610mm | 80556CM | 850557CM |
| 1524 x 610mm | 80966CM | 850967CM |

Room Design & Installation Service Available
Contact us for more information

Label Holders

Features

- Allows for clear identification of items
- Snaps onto shelf edge
- Accepts most commercial labels

Dimensions (w x h)

- 75 x 32mm



| Item | Description | Weight |
|--------|--------------|--------|
| 89990P | Label Holder | 0.01kg |

Shelf Divider

Features

- Keeps shelf contents orderly (height 203mm)
- Pressure fit to hold in place

Dimensions (w x h)

- 610 x 203mm

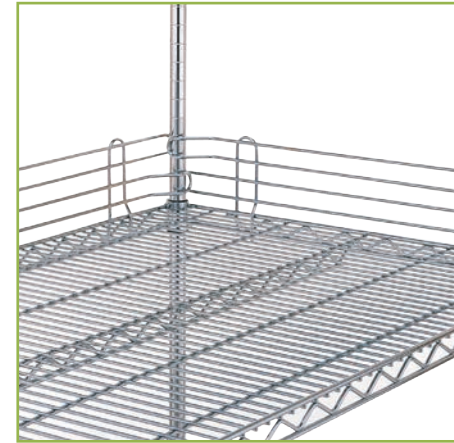


| Item | Description | Weight |
|--------|---------------|--------|
| 8DD24C | Shelf Divider | 0.7kg |

Stackable Shelf Ledges

Features

- Prevents items from protruding or falling (height 100mm)
- Pressure fit to hold in place
- Ledges can be stacked



| Item | Description | Weight |
|----------|----------------------|--------|
| 8L24N-4C | Shelf Ledge - 610mm | 0.9kg |
| 8L36N-4C | Shelf Ledge - 914mm | 1.2kg |
| 8L42N-4C | Shelf Ledge - 1066mm | 1.5kg |
| 8L48N-4C | Shelf Ledge - 1219mm | 1.7kg |
| 8L60N-4C | Shelf Ledge - 1524mm | 1.8kg |

High Density Storage - Top-Track®

Features

- Increases the storage capacity of a given area by up to 50%
- Maximises all available space
- Can eliminate the need to expand a given area through the use of optimised storage
- Creates moveable aisles
- Eliminates hard to reach or 'dead' spaces
- The guide track is positioned above the shelving system
- Aluminium overhead track system acts as a guide for mobile units
- Floors are easy to clean
- Carts & trolleys can easily be manoeuvred into & out of the active aisle
- Mobile units are designed to accommodate medium-duty applications
- The maximum weight capacity of a Top-Track® mobile unit is 410kg



Overhead Guide Track

Room Design & Installation Service Available
Contact us for more information

High Density Storage - qwikTRAK®

Features

- Increases the storage capacity of a given area by up to 50%
- Maximises all available space
- Can eliminate the need to expand a given area through the use of optimised storage
- Creates moveable aisles
- Eliminates hard to reach or 'dead' spaces
- The guide track is positioned below the shelving system, & protects the floor from wear & tear (does not need to be mounted to the floor)
- Compensates for uneven floor surfaces
- Track acts as a guide for mobile units
- Mobile units are designed to accommodate heavy-duty applications
- Allows for double deep configurations, where two systems are joined together for even greater storage capacity
- The maximum weight capacity of a qwikTRAK® mobile unit is 970kg



Floor Mounted Guide Track

Sterile Container Storage

Features

- Fully configurable freestanding modular racking suitable for the safe storage of sterile containers
- Compatible with both blue wrap & rigid containers stored on either...
 - Telescopic shelves - Compatible with containers up to max 600 x 300mm (width x depth)
 - Wire grid shelves - Compatible with containers up to max 600 x 250mm (width x depth)
- Anodised extruded aluminium uprights & cross members
- Bolted construction using high quality moulded fixings provided rigidity & allows the system to be altered easily
- Available as either static or mobile units
 - Static - Adjustable feet allow levelling on uneven floors
 - Mobile - 50mm pressed steel castors
- Optional wall mounting brackets allow static units to be fixed securely to the wall (when units are loaded over 100kg)
- Supplied for self-assembly
- Can be supplied pre-assembled, please ask for a quote

Static

| Item | Description | Weight |
|------------------|---|--------|
| Single Bay | | |
| 4HH-SCS/S1/2W5T | Static, Single Bay, 2 x Wire Grid Shelves & 5 x Telescopic Shelves | 30.2kg |
| 4HH-SCS/S1/8W | Static, Single Bay, 8 x Wire Grid Shelves | 21.4kg |
| Double Bay | | |
| 4HH-SCS/S2/4W10T | Static, Double Bay, 4 x Wire Grid Shelves & 10 x Telescopic Shelves | 56.9kg |
| 4HH-SCS/S2/16W | Static, Double Bay, 16 x Wire Grid Shelves | 38.0kg |

Mobile

| Item | Description | Weight |
|-------------------|---|--------|
| Single Bay | | |
| 4HH-SCS/M51/2W5T | Mobile, Single Bay, 2 x Wire Grid Shelves & 5 x Telescopic Shelves | 31.1kg |
| 4HH-SCS/M51/8W | Mobile, Single Bay, 8 x Wire Grid Shelves | 22.3kg |
| Double Bay | | |
| 4HH-SCS/M52/4W10T | Mobile, Double Bay, 4 x Wire Grid Shelves & 10 x Telescopic Shelves | 58.2kg |
| 4HH-SCS/M52/16W | Mobile, Double Bay, 16 x Wire Grid Shelves | 39.3kg |

Dimensions (w x d x h)

- Static
 - Single Bay - 394 x 642 x 1940mm
 - Double Bay - 737 x 642 x 1940mm
- Mobile (50mm Castors)
 - Single Bay - 394 x 642 x 1996mm
 - Double Bay - 737 x 642 x 1996mm

Standard Colours

- Uprights & Cross Members - Anodised Aluminium
- Wire Grids - Polished Stainless Steel
- Telescopic Shelves - Anodised Aluminium
- Plastic Mouldings - Green



4HH-SCS/M52/4W10T



Mobile Steel Castors



Static Adjustable Feet



Wire Grid Shelves



4HH-SCS/M51/8W
Shown with B Braun Aesculap
Sterile Containers (not
supplied)



4HH-SCS/S2/16W
Shown with B Braun Aesculap
Sterile Containers (not
supplied)