

Wireless Mobile Carts & Workstations

Mobile Workstations - Non-Powered	424
Options & Accessories	426
Caretray Trolley - Laptop	428

Mobile Workstations - Non-Powered

Features

- Models available for use with laptops & vesa display mounts & configurable with a keyboard tray
 - Laptop Mount - Secures the laptop (compatible with laptops up to 482mm in width)
 - Vesa Display Mount - Height adjustable, compatible with 75 x 75mm / 100 x 100mm square hole patterns
 - Keyboard Tray - Retractable tray with wrist support & left / right mouse pad (accepts full size & Medigenic keyboards with room for mouse storage)
- Height adjustable using a gas damper (780 - 1130mm)
- Extruded aluminium column provides a smooth linear height adjustment
- Safety feature prevents trapping of the user beneath the workstation
- Cast aluminium four leg base
- Acrylic work surface
- Configurable with a range of accessories
- 100mm twin-wheel castors (4 x braking)

Dimensions (w x d x h)

- Overall - 630 x 630 x 780 - 1130mm
- Work Surface - 500 x 465mm
- Keyboard Tray - 500 x 255mm
- Laptop Mount - Accepts laptops up to 482mm

Standard Colours

- Base - White
- Work Surface - Blue
- Upright & Sheet - White



5RC/MW/NP/VM

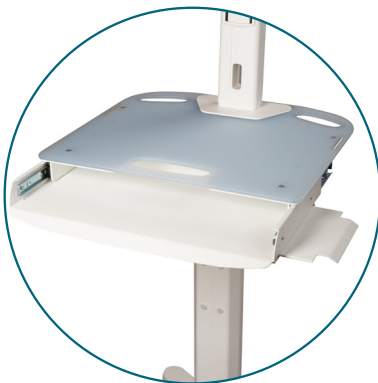
Item	Description	Weight
5RC/MW/NP	Mobile Workstation - Non-Powered	19.6kg
5RC/MW/NP/LM	Mobile Workstation - Non-Powered, Laptop Mount	20.2kg
5RC/MW/NP/VM	Mobile Workstation - Non-Powered, Vesa Display Mount	22.4kg
5RC/MW/NP/VM/KT	Mobile Workstation - Non-Powered, Vesa Display Mount, Keyboard Tray	23.6kg

Options / Accessories

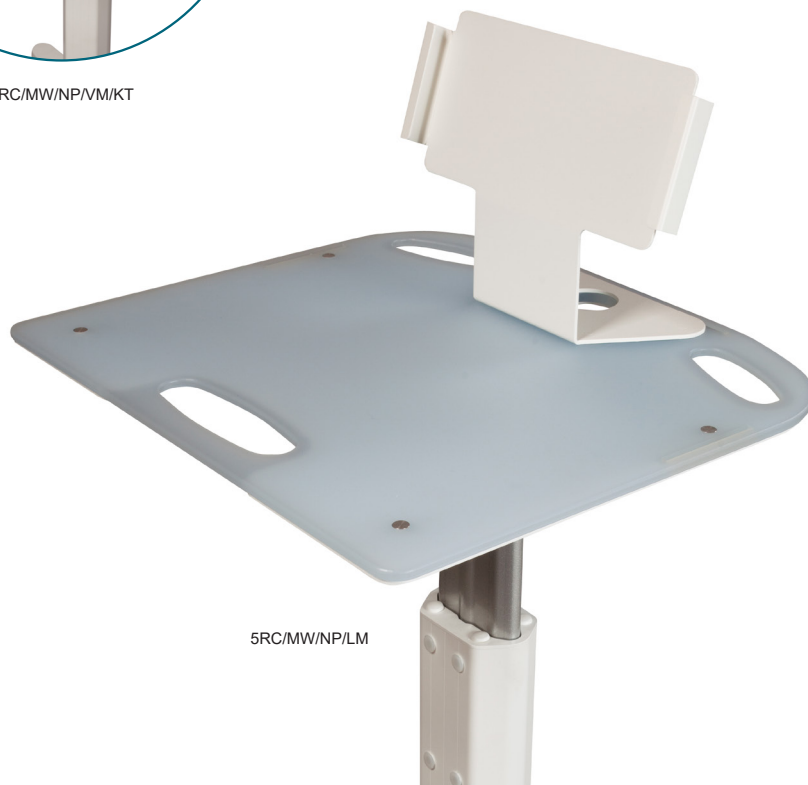
- 5RC/SB - Storage Basket
- 5RC/DRK - Side Din Rail Kit
- 5RC/PSH - Power Supply Unit Holder
- GMBH/15 - Glove / Mask Box Holder
- CT/ALC - Alcohol Gel Holder
- SBH/15 - Sharps Box Holder



5RC/MW/NP



5RC/MW/NP/MM/KT



5RC/MW/NP/LM

Storage Basket

Features

- Wire storage basket
- Mounts to the aluminium extrusion

Standard Colours

- Paint - Grey White

Dimensions (w x d x h)

- 380 x 180 x 206mm



Item	Description	Weight
5RC/SB	Storage Basket	1.0kg

Power Supply Unit Holder

Features

- Provides a location to store the power supply unit
- Mounts to the underside of the top

Standard Colours

- Paint - Grey White



Item	Description	Weight
5RC/PSH	Power Supply Unit Holder	0.6kg

Side Din Rail Kit

Features

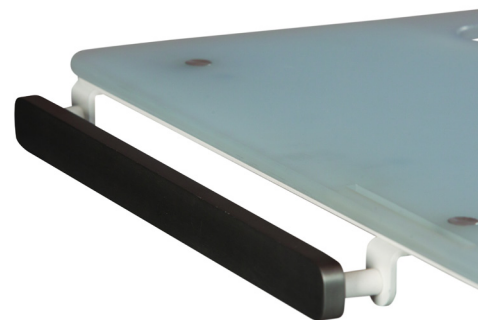
- Aluminium DIN rail
- Provides a rail measuring 10 x 25mm to hang / position accessories
- Mounts to the right / left side of the unit

Standard Colours

- Aluminium / White

Dimensions (w x d x h)

- 300 x 10 x 25mm



Item	Description	Weight
5RC/DRK	Side Din Rail Kit	0.6kg

Glove / Mask Box Holder, One Box

Features

- Accommodates glove & mask boxes up to 150mm in width
- Box presented in a portrait orientation
- Fitted with a 15mm hook

Standard Colours

- Paint - Grey White

Dimensions (w x d x h)

- 143 x 122 x 177mm



Item	Description	Weight
GMBH/15	Glove / Mask Box Holder, One Box	0.6kg

Alcohol Gel Holder

Features

- Accepts bottles with 90 x 90mm square base
- Fitted with a 15mm hook

Standard Colours

- Paint - Grey White

Dimensions (w x d x h)

- 95 x 110 x 115mm



Item	Description	Weight
CT/ALC	Alcohol Gel Holder	0.3kg

Sharps Box Holder

Features

- Accepts sharps boxes up to seven litres capacity
- Sharps box secured using a rubber band fitted with a toggle
- Fitted with a 15mm hook

Standard Colours

- Paint - Grey White

Dimensions (w x d x h)

- 127 x 118 x 230mm



Item	Description	Weight
SBH/15	Sharps Box Holder	0.5kg

Caretray Trolley - Laptop

Features

- Trolleys suitable for use with laptops
- Suitable for use with Electronic Prescribing & Medicines Administration (EPMA) & Electronic Patient Records (EPR)
- Quick & easy disassembly, assists thorough & deep cleaning
- Fully welded mild steel frame
- Recyclable polypropylene one-piece top & side panels, smooth surfaces & radiused edges assists cleaning (compatible with steam cleaning)
 - Top Panel - Raised edges on three sides provide defined grab points to act as push handles, whilst an integral rim at the front contains spillages (max load 30kg)
 - Side Panels - Incorporate runners with positive stops preventing trays from being accidentally withdrawn (symmetrical design allows tray insertion from either side)
- Carerails fitted to either side support a wide range of accessories
- Solid grade laminate door & back panel providing security for the contents of the trays
- Two locking options...
 - High Security Bolt Lock - Supplied with two keys
 - Electronic Push Button Lock - Programmable four-digit code
- Trolley pre-configured with the following accessories...
 - Laptop Holder, Removable, Swing Arm
- Translucent, impact-resistant trays & dividers, smooth surfaces & radiused edges assists cleaning (compatible with steam cleaning / high temperature machine washing)
- Trays feature an integral handle with a plastic clip-on label cover (coloured label strips supplied - white, blue, green, yellow & red)
- Each tray supplied with 2 x long & 2 x short dividers
- Max load per tray 5kg
- Polyurethane ring buffers offer protection to both the trolley & fabric of the building
- 100mm polymer castors, 2 off braking
- When not in use, trolleys storing medicines should be secured to the wall using a Security Clamp (see locking & security accessories)

Dimensions (w x d x h)

- Overall Dimensions - 550 x 550 x 993mm
- Plastic Top - 455 x 455 (internal) at height 968mm
- Trays
 - Shallow Tray - 355 x 405 x 100mm (internal)
 - Deep Tray - 355 x 405 x 150mm (internal)

Standard Colours

- Paint - Grey White

Options / Accessories

- Defibrillator Platform - page 61
- Carerail Mounted - page 62
- Laptop Holders - page 68
- Castors & Ring Buffers - page 70
- Trays, Shelves, Dividers & Labels - page 71



CTLAPTM1/10/3S2D/HSB

Description	High Security Bolt Lock	Electronic Push Button Lock	Weight
3 x 100mm, 2 x 150mm Trays	CTLAPTM1/10/3S2D/HSB	CTLAPTM1/10/3S2D/EPB	39.3kg
4 x 100mm, 1 x 150mm Trays	CTLAPTM1/10/4S1D/HSB	CTLAPTM1/10/4S1D/EPB	39.0kg
6 x 100mm Trays	CTLAPTM1/10/6S/HSB	CTLAPTM1/10/6S/EPB	40.1kg

Other products that you may be interested in...

See Pages 238 - 249

Medical Records



MRT/TR/1B/EPB



MRW/WA/1D/XP/EPB



MRT/WA/L/CAM