



Bristol Maid™
Hospital Metalcraft™ Limited



Mobile Computer Carts

Laptop Cart - Intermediate, Non-Powered

Features

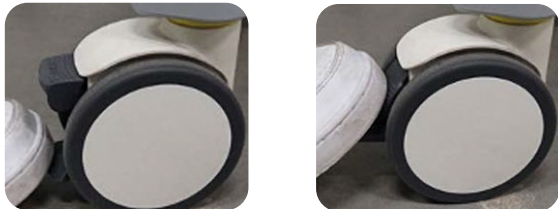
- Non-powered cart suitable for use with laptops
- Suitable for laptops up to 436mm in width
- Clamp to secure the laptop
- Height adjustable using a gas damper (833 - 1233mm)
- Four leg-base
- Polymer easy clean work-surface
- Integral push handle at front
- 100mm twin-wheel castors (2 x braking)

Dimensions (w x d x h)

- Overall - 611 x 660 x 833 - 1233mm
- Work Surface - 550 x 580mm (includes handle)

Colours

- Base - Grey
- Upright - Grey
- Work Surface - White



The brake is engaged & disengaged using downwards pressure on the two levers



Item	Description	Weight
5AL/LC	Laptop Cart - Intermediate, Non-Powered	16.7kg

Laptop Cart - Advanced, Non-Powered

Features

- Non-powered cart suitable for use with laptops
- Laptop is secured under the worksurface, concealing the keyboard
- Suitable for laptops up to 436mm in width
- Height adjustable using a pulley system (800 - 1300mm)
- Pull out keyboard tray, can be tilted & features an integrated wrist support. Mouse tray is retractable for right / left hand use
- Bin with integral handle at the rear of the unit
- Four leg-base
- Polymer easy clean work-surface
- Integral push handle at front
- 100mm twin-wheel anti-static castors (2 x braking)

Dimensions (w x d x h)

- Overall - 611 x 727 x 800 - 1300mm
- Work Surface - 550 x 480mm (includes handle)

Standard Colours

- Base - Grey
- Upright - Grey
- Work Surface - White

Option / Accessories

- 5AL/KB - Qwerty Keyboard
- 5AL/MO - Mouse
- 5AL/PA - Power Adaptor
- 5AL/RPC - Retractable Power Cable
- 5AL/DR - Drawer Unit



5AL/LC/A
(Optional AIO PC & Drawer Unit Not Included)

Item	Description	Weight
5AL/LC/A	Laptop Cart - Advanced, Non-Powered	29.5kg

VESA Cart - Intermediate, Non-Powered

Features

- Non-powered cart suitable for use with VESA display mounts (100 x 100mm & 75 x 75mm)
- Height adjustable using a gas damper (833 - 1233mm)
- Four leg-base
- Polymer easy clean work-surface
- Integral push handle at front
- 100mm twin-wheel castors (2 x braking)

Dimensions (w x d x h)

- Overall - 611 x 660 x 833 - 1233mm
- Work Surface - 550 x 580mm (includes handle)

Standard Colours

- Base - Grey
- Upright - Grey
- Work Surface - White

Option / Accessories

- 5AL/KT - Keyboard Tray
- 5AL/KB - Qwerty Keyboard
- 5AL/MO - Mouse
- 5AL/DR - Drawer Unit
- 5AL/24/AIO/PC - 24" AIO PC, 3 Battery Cells, I5, Touch, 8GB, 256GB
- 5AL/AIO/BAT - Battery for AIO PC
- 5AL/AIO/BAT/CH - Battery Charger for AIO PC



5AL/CC/VM
(Optional AIO PC & Keyboard Tray not Included)

Item	Description	Weight
5AL/CC/VM	VESA Cart - Intermediate, Non-Powered	18.7kg

VESA Cart - Advanced, Non-Powered

Features

- Non-powered cart suitable for use with VESA display mounts (100 x 100mm & 75 x 75mm)
- Height adjustable using a pulley system (800 - 1300mm)
- Pull out keyboard tray, can be tilted & features an integrated wrist support. Mouse tray is retractable for right / left hand use
- Scanner, mouse & coiled cable holder
- Bin with integral handle at the rear of the unit
- Four leg-base
- Polymer easy clean work-surface
- Integral push handle at front
- 100mm twin-wheel anti-static castors (2 x braking)

Dimensions (w x d x h)

- Overall - 611 x 727 x 800 - 1300mm
- Work Surface - 550 x 480mm (includes handle)

Standard Colours

- Base - Grey
- Upright - Grey
- Work Surface - White

Option / Accessories

- 5AL/KB - Qwerty Keyboard
- 5AL/MO - Mouse
- 5AL/PA - Power Adaptor
- 5AL/RPC - Retractable Power Cable
- 5AL/DR - Drawer Unit
- 5AL/24/AIO/PC - 24" AIO PC, 3 Battery Cells, I5, Touch, 8GB, 256GB
- 5AL/AIO/BAT - Battery for AIO PC
- 5AL/AIO/BAT/CH - Battery Charger for AIO PC



5AL/CC/A/VM

(Optional AIO PC, Keyboard, Mouse & Scanner Not Included)

Item	Descriptionv	Weight
5AL/CC/A/VM	VESA Cart - Advanced, Non-Powered	31.0kg

VESA Cart - Advanced, Powered

Features

- Powered cart suitable for use with VESA display mounts (100 x 100mm & 75 x 75mm)
- 520Whr power supply
- Battery suitable for powering a small form factor PC, thin client, all in one panel PC or monitor
- Height adjustable using a pulley system (800 - 1300mm)
- Pull out keyboard tray, can be tilted & features an integrated wrist support. Mouse tray is retractable for right / left hand use
- Scanner, mouse & coiled cable holder
- Bin with integral handle at the rear of the unit
- Four leg-base
- Polymer easy clean work-surface
- Integral push handle at front
- 100mm twin-wheel anti-static castors (2 x braking)

Dimensions (w x d x h)

- Overall - 611 x 727 x 800 - 1300mm
- Work Surface - 550 x 480mm (includes handle)

Standard Colours

- Base - Grey
- Upright - Grey
- Work Surface - White

Option / Accessories

- 5AL/KB - Qwerty Keyboard
- 5AL/MO - Mouse
- 5AL/PA - Power Adaptor
- 5AL/RPC - Retractable Power Cable
- 5AL/DR - Drawer Unit
- 5AL/24/MON - 24" Terra Monitor, 12V



5AL/CC/A/PO/VM
(Optional Monitor, Keyboard & Mouse Not Included)

Item	Description	Weight
5AL/CC/A/PO/VM	VESA Cart - Advanced, Powered	37.0kg

Configuration & Accessories/ Options

		Laptop Cart - Advanced, Non-Powered	VESA Cart - Intermediate, Non-Powered	VESA Cart - Advanced, Non-Powered	VESA Cart - Advanced, Powered
		5AL/LC/A	5AL/LC	5AL/CC/A/VM	5AL/CC/A/PO/VM
5AL/KT	Keyboard Tray	Standard	Optional	Standard	Standard
5AL/KB	Qwerty Keyboard	Optional	Optional	Optional	Optional
5AL/MO	Mouse	Optional	Optional	Optional	Optional
5AL/PA	Power Adaptor	Optional	N/A	Optional	Optional
5AL/RPC	Retractable Power Cable	Optional	N/A	Optional	Optional
5AL/DR	Drawer Unit	Optional	Optional	Optional	Optional
5AL/24/AIO/PC	24" AIO PC, 3 Battery Cells, I5, Touch, 8GB, 256GB	N/A	Optional	Optional	N/A
5AL/AIO/BAT	Battery for AIO PC	N/A	Optional	Optional	N/A
5AL/AIO/BAT/CH	Battery Charger for AIO PC	N/A	Optional	Optional	N/A
5AL/24/MON	24" Terra Monitor, 12V	N/A	N/A	N/A	Optional

Accessories/ Options

Keyboard Tray

Features

- Pull out keyboard tray
- Tilt adjustable & features an integrated wrist support
- Retractable mouse tray, configurable for right / left hand use



Item	Description
5AL/KT	Keyboard Tray

Power Adapter

Features

- Adaptor to allow connectivity to the hardware



Item	Description
5AL/PA	Power Adapter

Qwerty Keyboard

Features

- Water-resistant, dust free & antibacterial (IP67)
- Suitable for use with all common disinfectants
- Can be turned off for cleaning
- Antibacterial silicone cover



Item	Description
5AL/KB	QWERTY Keyboard

Retractable Power Cable

Features

- Coiled Cable
- Fitted with a UK 3-pin plug



Item	Description
5AL/RPC	Retractable Power Cable

Mouse

Features

- Scroll wheel
- Water-resistant, dust free & antibacterial (IP67)
- Suitable for use with all common disinfectants



Item	Description
5AL/MO	Mouse

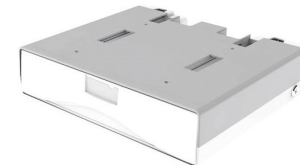
Drawer Unit

Features

- Single drawer
- Supplied with two keys
- Up to two drawers can be fitted to a cart

Internal Dimension (w x d x h)

- 399 x 298 x 70mm



Item	Description
5AL/DR	Drawer Unit

AIO PC, 3 Battery Cells, I5, Touch 8GB, 256 GB

Features

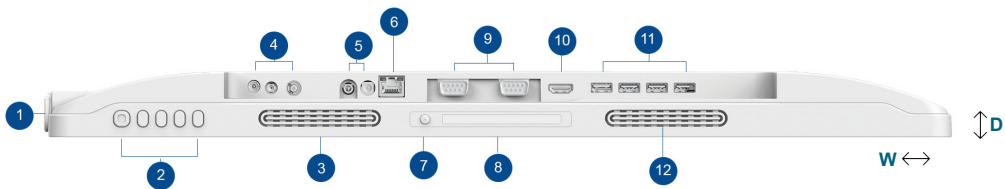
- Three integrated hot-swappable batteries
- High resolution 24" capacitive touchscreen
- I5 Pentium processor
- Fanless, IP65-rated front panel, IPX2-rated enclosure
- Built-in LED reading light
- HDMI video-out, support up to 4k UHD resolution
- VESA compatibility to maximise installation flexibility (100 x 100mm)
- 8GB Ram
- 256GB Storage
- Microsoft Windows 10
- Display resolution 1920 x 1080
- WLAN, Bluetooth
- 2 USB 2.0 ports, 1 COM port, 1 x HDMI-out, DC-in & DC-out
- AC/DC adaptor
- Full-HD front camera, RFID-reader, smart card reader
- 6.4kg without batteries, 7.9kg including batteries

Dimensions (w x d x h)

- 24" AIO PC - 564 x 41 x 371mm

Optional

- 5AL/AIO/BAT/CH - Battery Charger
- 5AL/AO/BAT - Battery



- | | | | | | |
|---|---------------------------------------|----|----------------------|----|----------|
| 1 | USB 2.0 (582/584)
USB 3.0 (581) | 6 | Ethernet Port | 11 | USB 3.0 |
| 2 | On/Off Button and
Function Buttons | 7 | Reading Light Power | 12 | Speakers |
| 3 | Speakers | 8 | Reading Light | | |
| 4 | DC-Outputs | 9 | COM Ports (optional) | | |
| 5 | DC-Inputs | 10 | HDMI Input | | |

Item	Description	Weight
5AL/24/AIO/PC	24" AIO PC, 3 Battery Cells, I5, Touch, 8GB, 256GB	7.9kg

Key Features



A choice of Intel i5, i7 & i9 Processor:
Powerful Intel Pentium Gold or Core



Microsoft Windows 10



Energy Star 8.0 certified (582)



Wifi & Bluetooth Connectivity



Battery Status made easy with colour
LED signals



4K LCD Integrated touchscreen
system



5AL/AIO/BAT/CH - Battery Charger

- Can hold upto 6 batteries



VESA Standard Mounting Design

24" Terra Monitor, 12v

Features

- 24" IPS panel technology screen
- 1920 x 1080 Full HD
- Anti-reflective
- LED backlight
- Headphone out
- HDMI DisplayPort 1.2
- HDCP
- Built in speakers
- 100 x 100mm VESA mount
- 12v

Dimensions (w x d x h)

- 540 x 42 x 322mm



Energy Rating D
14kWh/1000h



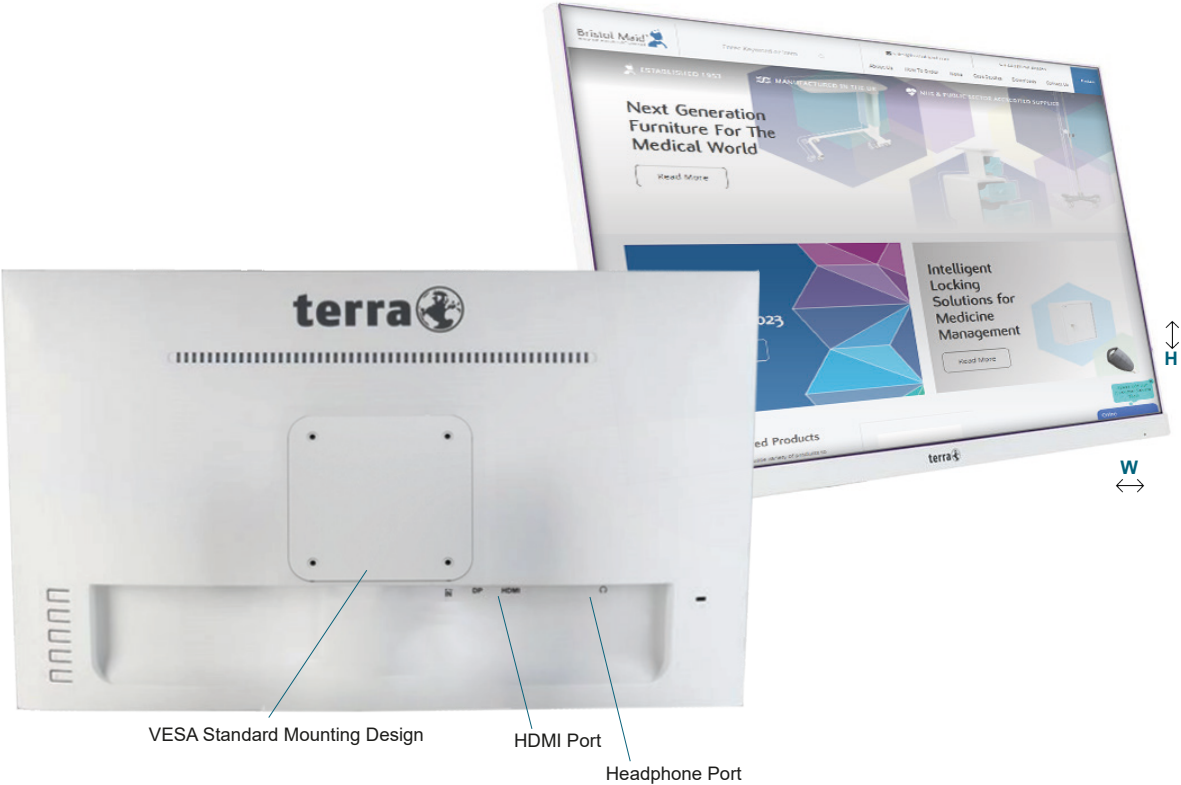
Energy Efficient



1080p Full HD
Screen



Flicker free / blue
light function



Item	Description	Weight
5AL/24/MON	24" Terra Monitor, 12v	3.0kg

Area Sales Representatives



Scotland & N.Ireland
Ian Farnfield
01258 451338
scotland@bristolmaid.com



London
Chris Davis
07725 543862
london@bristolmaid.com



Republic of Ireland & Export
Dave Morton-Jones
+44 (0)1258 484468
export@bristolmaid.com



South & South West
Jason Dufield
07876 441477
sswest@bristolmaid.com



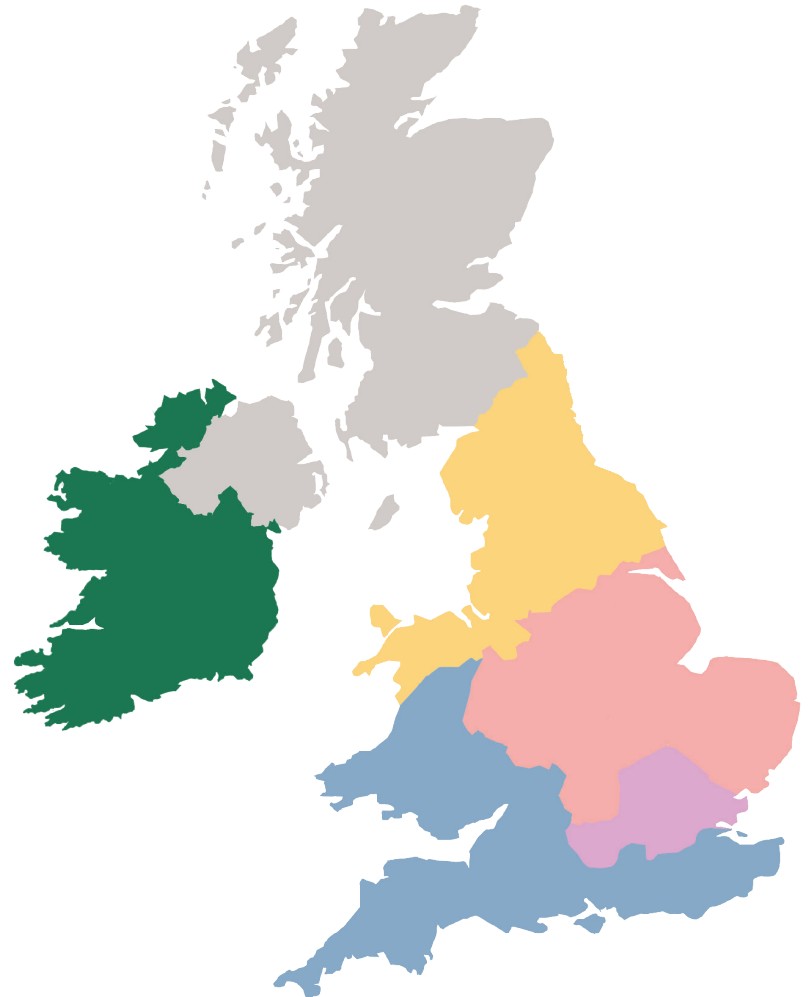
North
Samantha Lowe
07790 916052
nwest@bristolmaid.com



National Sales Manager
Steve Poller
07711 095899
spoller@bristolmaid.com



Midlands
Ian Newbould
07500 039301
midlands@bristolmaid.com





Manufacturing Medical Furniture & Equipment Since 1953

With over 70 years of experience, Bristol Maid is a leading manufacturer and supplier of medical furniture & equipment.

From design and manufacture to supply and installation, Bristol Maid has a reputation for providing high product quality, excellent customer service and value for money.

We take pride in working in close partnership with our customers applying innovative design and technology to deliver effective solutions for today while anticipating the needs of tomorrow.



Hospital Metalcraft Limited
Blandford Heights, Blandford Forum,
Dorset. DT11 7TG, UK

Tel: +44 (0) 1258 451338
Fax: +44 (0) 1258 455056
sales@bristolmaid.com

www.bristolmaid.com

MKT-010224-273-1

