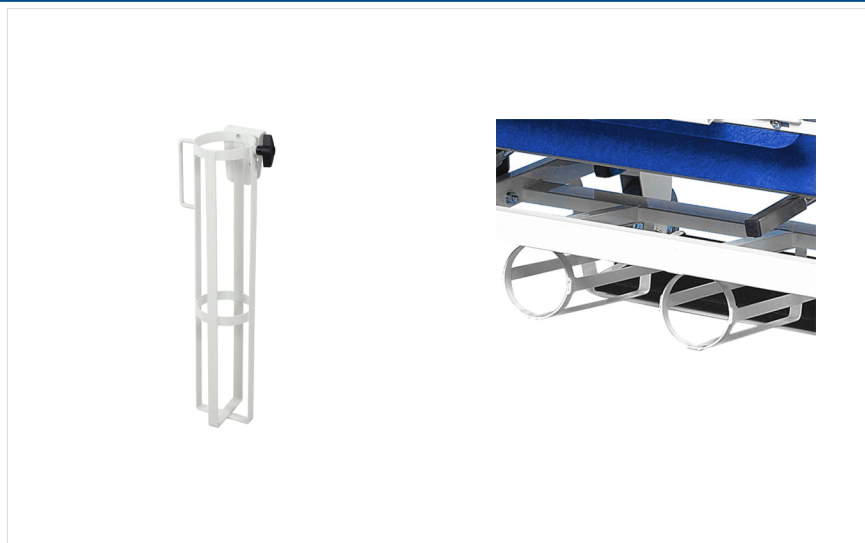


Cylinder Holders

Product Images



Description

FEATURES

- Compatible with 100mm diameter cylinders (C/CD/D/E)
- Mounts to IV support tube at rear of chair using a handwheel
- Compatible with G/200/RS, G/205/FS, G/305/FS & G/500/RS models

STANDARD COLOURS

- Paint - Grey

Code	Description	Weight
CYHP/D1	C/CD/D Size- Compatible with G/200/RS, G/205/FS, G/305/FS chairs	1kg
CYHP/E1	E Size- Compatible with G/200/RS, G/205/FS, G/305/FS chairs	1.8kg
G/500/CYL	Bariatric - C/CD/D Size- Compatible with G/500/RS chairs	1kg